

Little Falls

Mississippi River Industrial Complex

PowerPoint Presentation by the
Morrison County Historical Society
2003

Little Falls Dam



- Site of the Little Falls Dam, looking south – July 1887. W. E. Christnagel copy photo.

Little Falls Dam



- Rock channel on west channel of Mississippi River before Little Falls Dam was built. June 1887. W. E. Christnagel copy photo.

Dam Construction



- Crew constructing the dam at Little Falls, MN. 1887.

View of the Dam



- View of Little Falls Dam from what is now (2003) Maple Island Park. Photo dated July 5, 1905.

Another View of the Dam



- River scene and dam, Little Falls, MN. Undated photo.

Elevated View



- Elevated view of the Little Falls Dam, Mill Island, bridge and trestle. Undated.

The Canal



- Men and horses digging the canal on the west side of the Mississippi River in Little Falls, MN. 1888.

The Canal in Use

- Hennepin Paper Mill Canal, Little Falls, MN. Undated photo.



Water Power



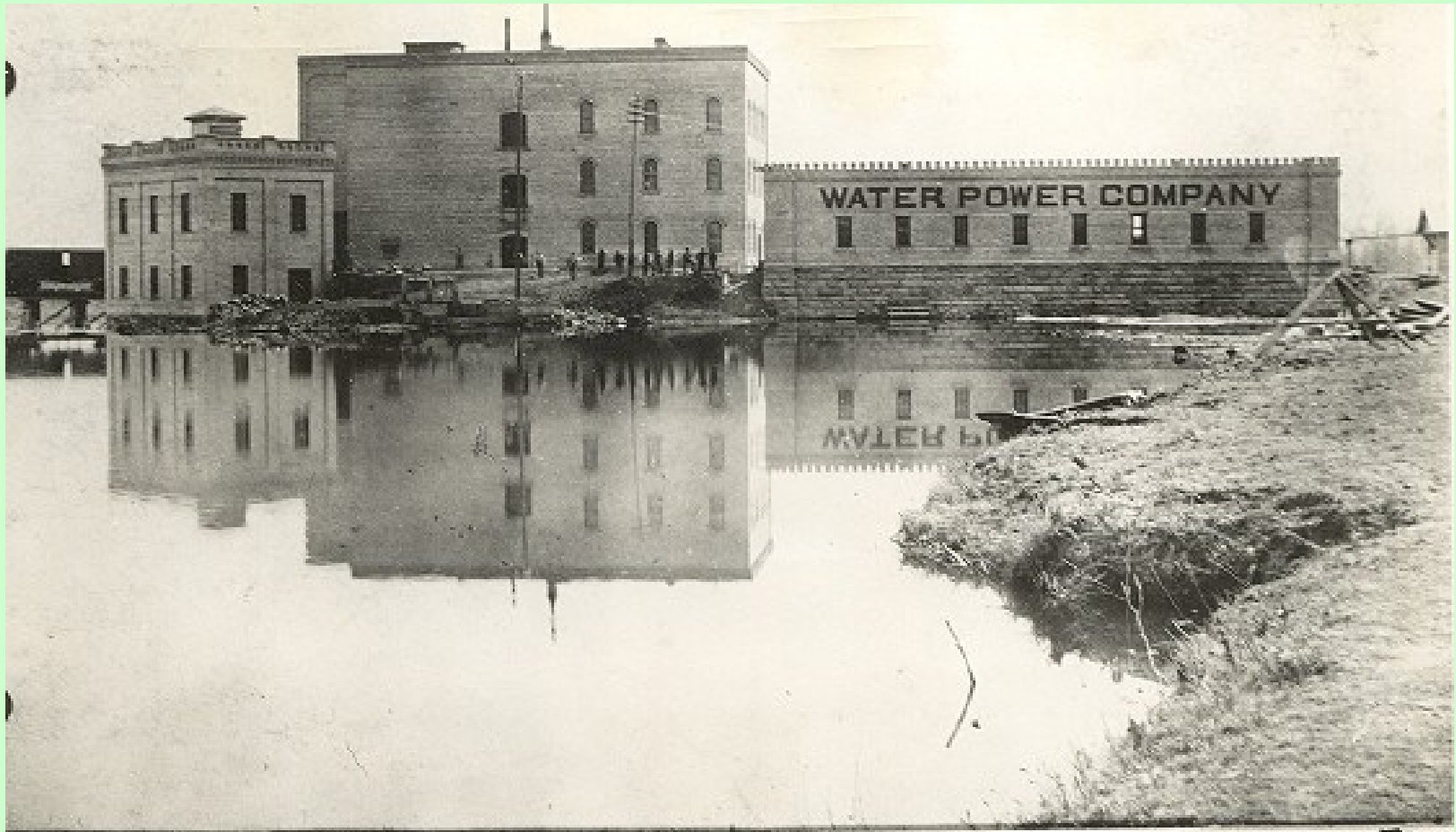
- Powerhouse above dam, Little Falls, MN. Undated photo.

Water Power



- Another view of the Powerhouse above the Little Falls Dam.

Water Power



- Gate House, Water Power Company and Flour Mill, Little Falls, MN. 1890. W. E. Christnagel copy photo.

Water Power



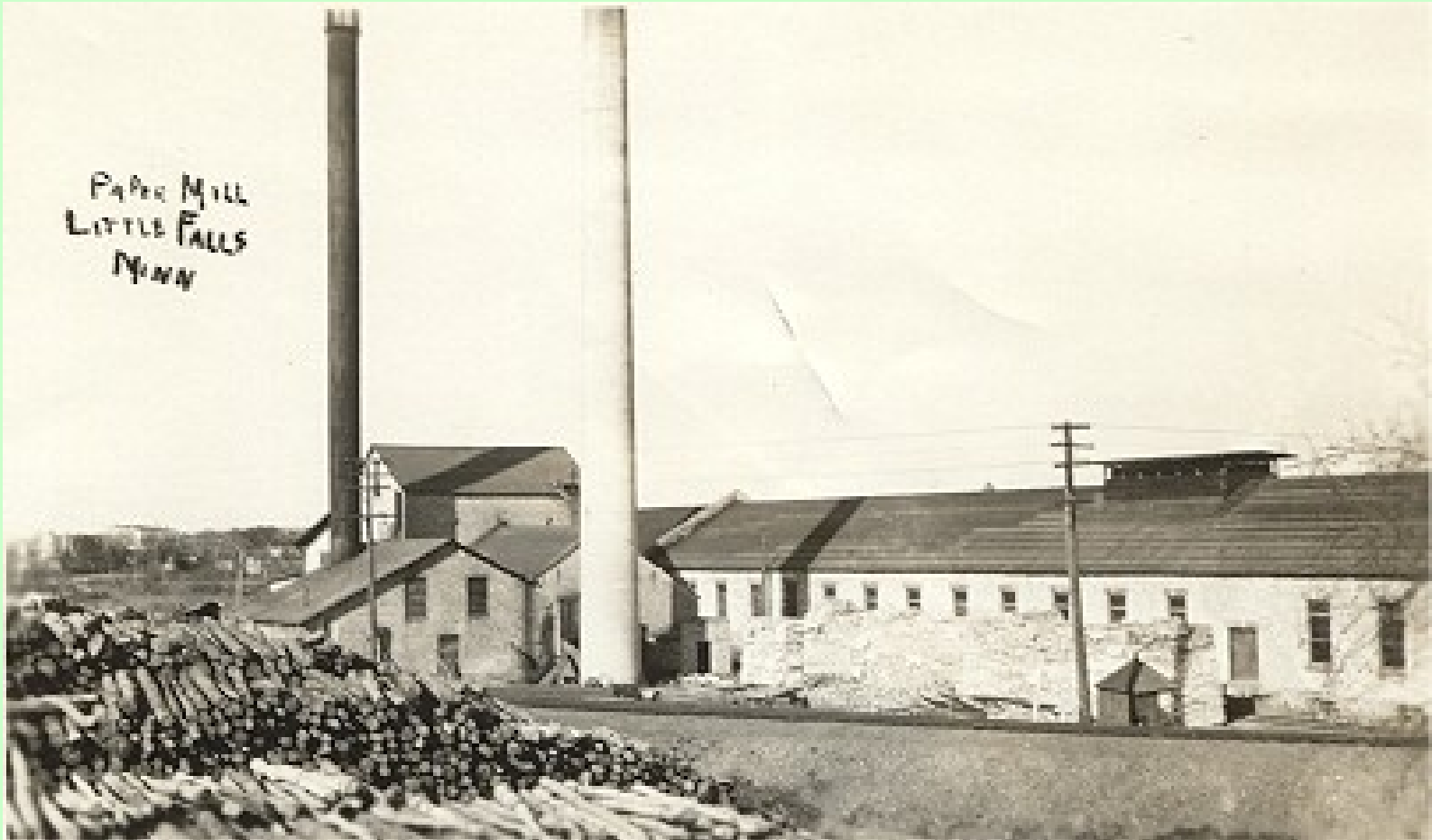
- North side of Gate House at the head of the main canal. W. E. Christnagel copy photo.

Water Power



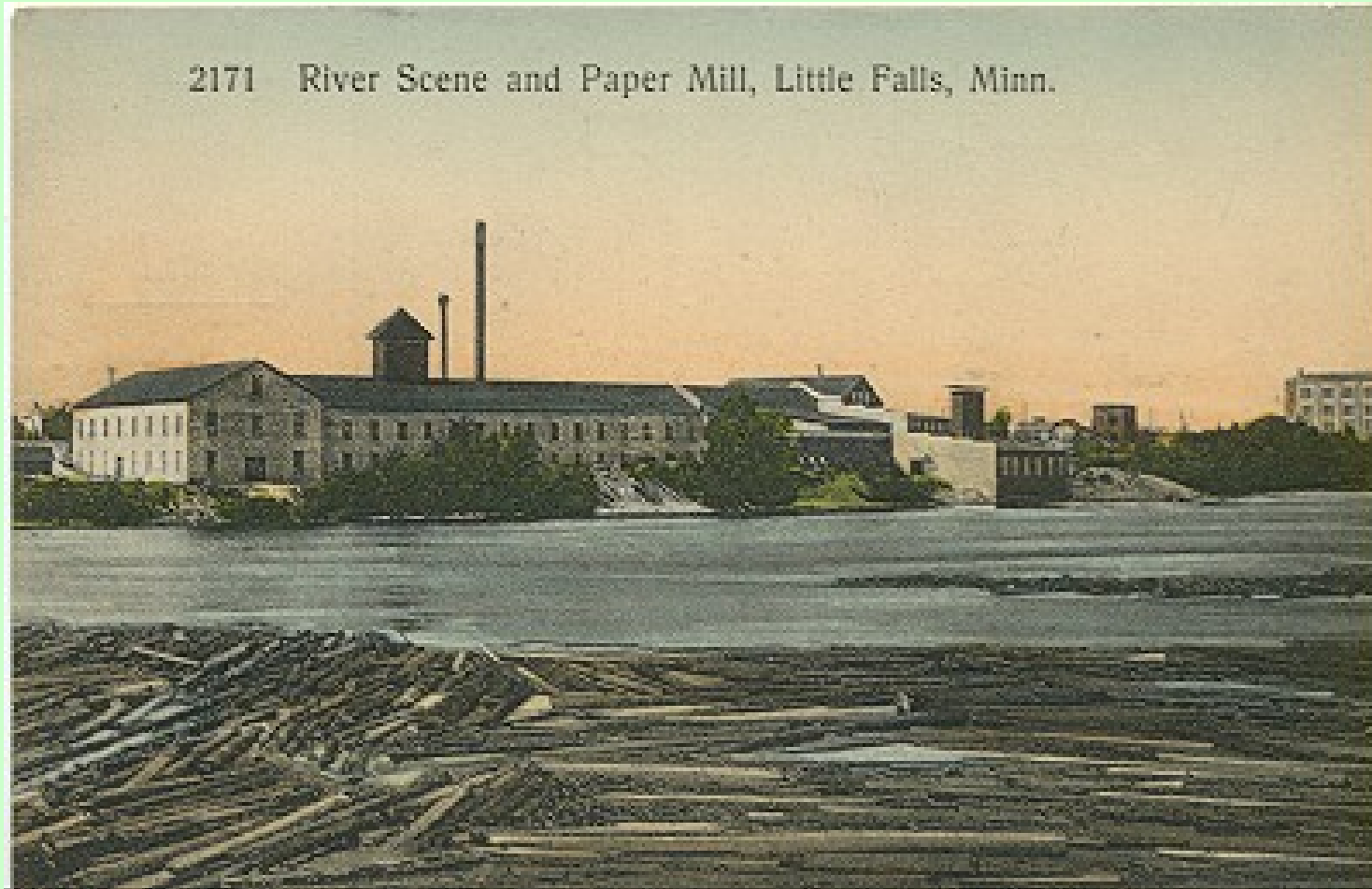
- View of the Power Company from the east side of the Mississippi River in Little Falls, MN. W. E. Christnagel copy photo.

Paper Mill



- Hennepin Paper Mill, Little Falls, MN. Located on west side of Mississippi River, just south of the dam.

Paper Mill



- River scene showing Hennepin Paper Mill, Little Falls, MN. Undated.

Paper Mill



- Hennepin Paper Mill, Little Falls, MN. Undated photo.

Pine Tree Lumber Company



- Pine Tree Lumber Company Saw Mill, Little Falls, MN.

Pine Tree Lumber Company



- Pine Tree Lumber Company Mill, Little Falls, MN.

Pine Tree Lumber Company



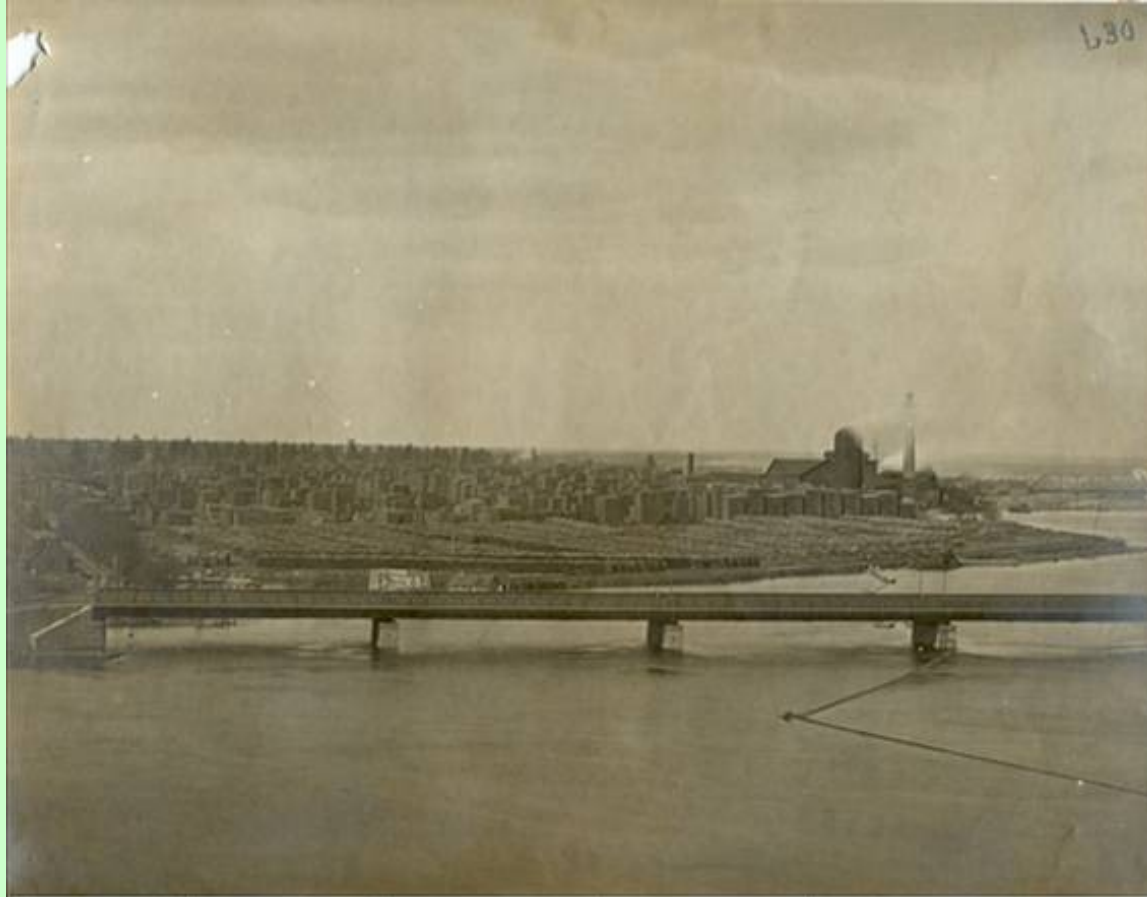
- Pine Tree Lumber Company. Photo shows log boom, saw and planing mills. 1912.

Pine Tree Lumber Company



- Pine Tree Mill and lumber alleys. West side of river from saw mill, south of Broadway bridge. 1895-1900.

Pine Tree Lumber Company



- Pine Tree Lumber Company – lumber piles.
1890-1905.

Pine Tree Lumber Company



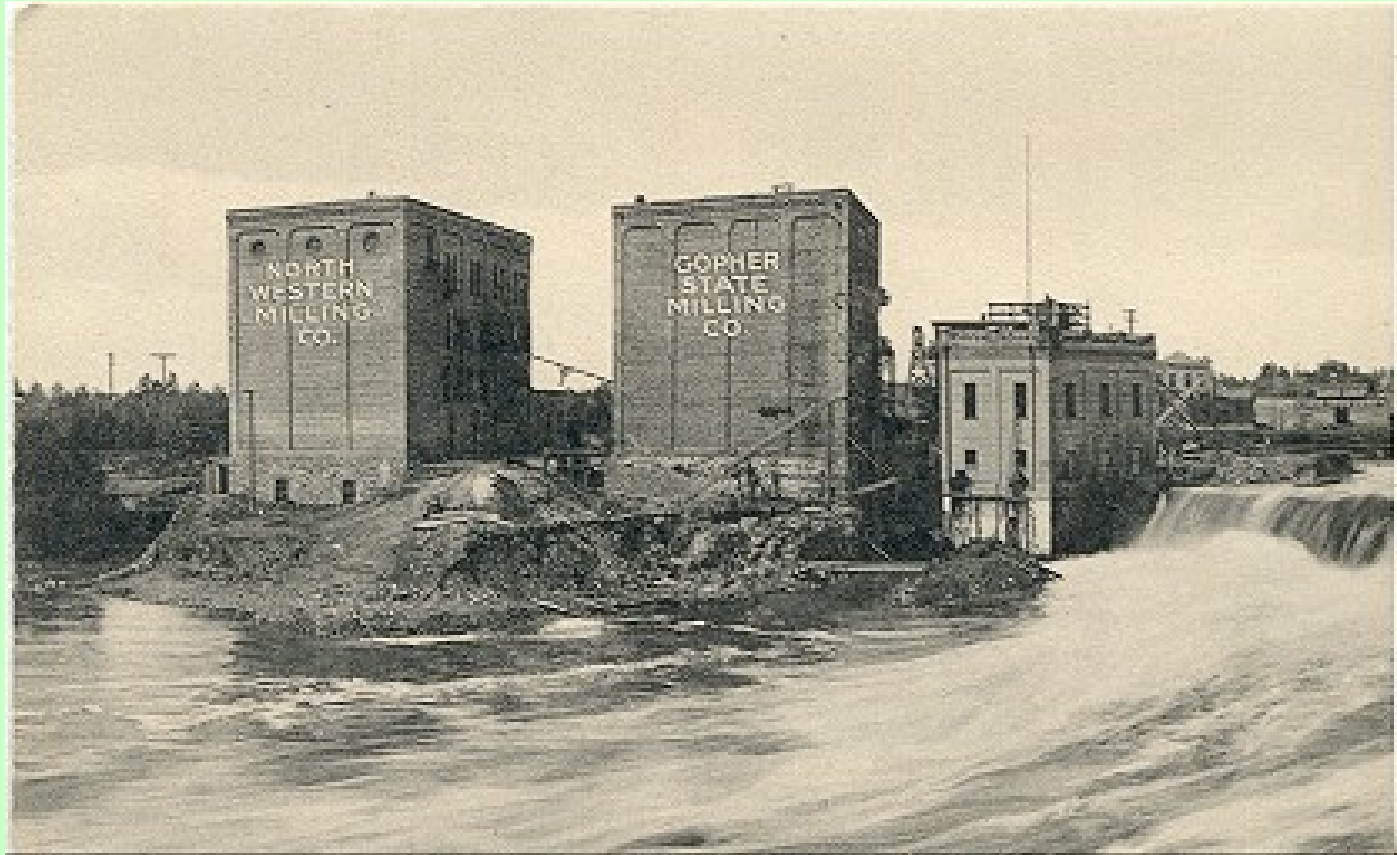
- Barn at Pine Tree Lumber Company, north of the trestle bridge on the Mississippi River. Photo by Z. N. Barnes.

Logs on Dam



- Logs hung up on dam. Photo by Z. N. Barnes.

Mills



- North Western Milling Company and Gopher State Milling Company, Little Falls, MN. Undated photo.

Mills



- A view of mills and the dam at Little Falls, MN. Undated photo.

Mills



- Northwestern Milling Company, Little Falls, MN.
Undated photo.

Mills



- Little Falls Milling Company, Little Falls, MN. Undated photo.

Mills

- Little Falls Milling Company, a.k.a. Tanner Mill, Little Falls, MN. Undated photo.



Bridge



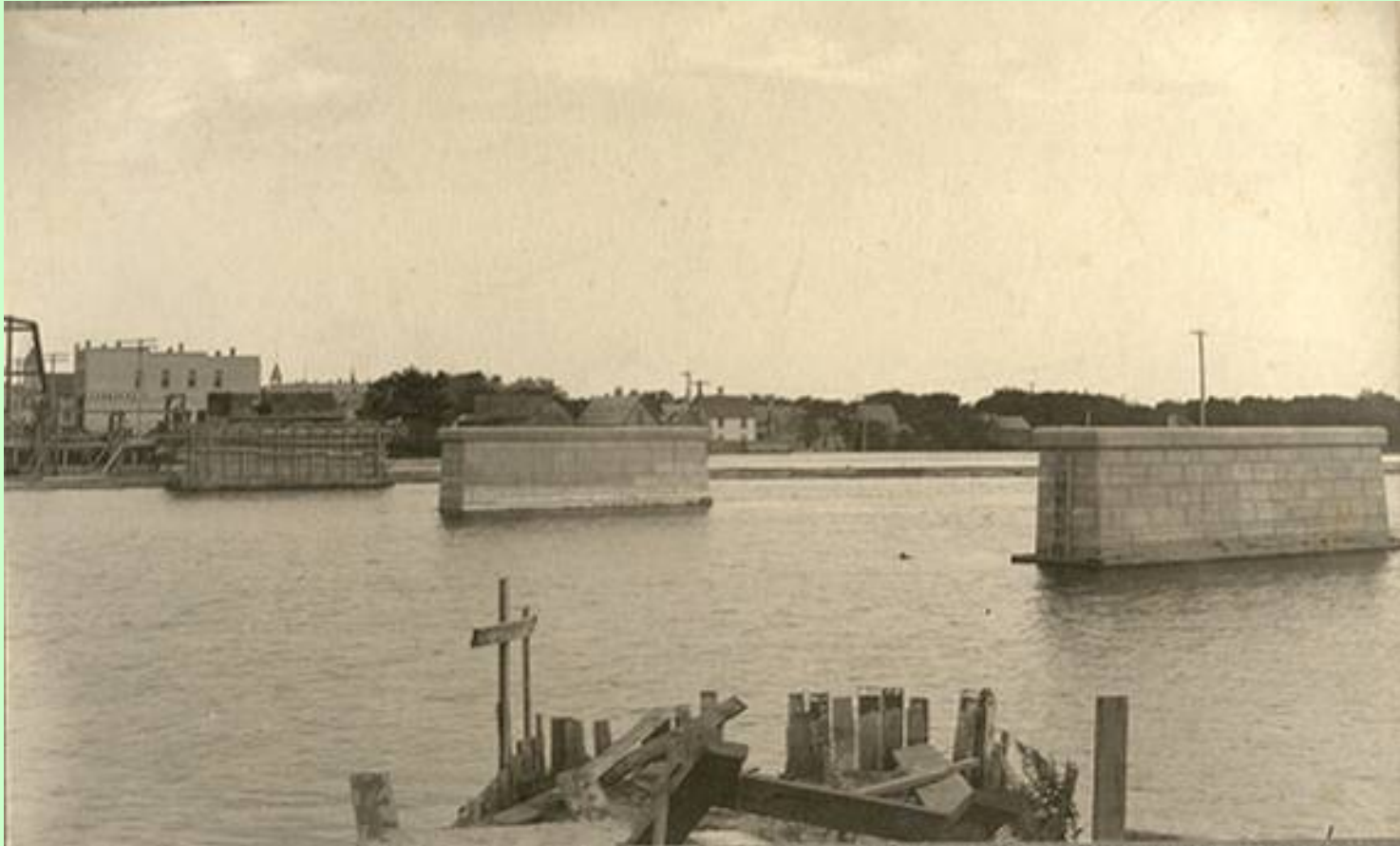
- Broadway Bridge, Little Falls, MN. Homecoming Day, 1919.

Bridge Construction



- Temporary bridge, first span on west side. Little Falls, MN. Undated photo.

Bridge Construction



- Building Broadway Bridge, Little Falls, MN. 1902. Three center piers. Photo shows on left the old combination bridge built here in 1884. This bridge was moved to Ft. Ripley village around 1903.

Bridge Construction



- Laying the concrete floor on the new Broadway Bridge, Little Falls, MN. Photo by W. E. Christnagel.

Bridge Destruction



- Old Broadway Bridge being torn down. Photo by W. E. Christnagel.

Bridge



- Broadway Bridge, Little Falls, MN. 1942. Photo by W. E. Christnagel.

Little Falls

Mississippi River Industrial Complex



Both photos by Z. N. Barnes.