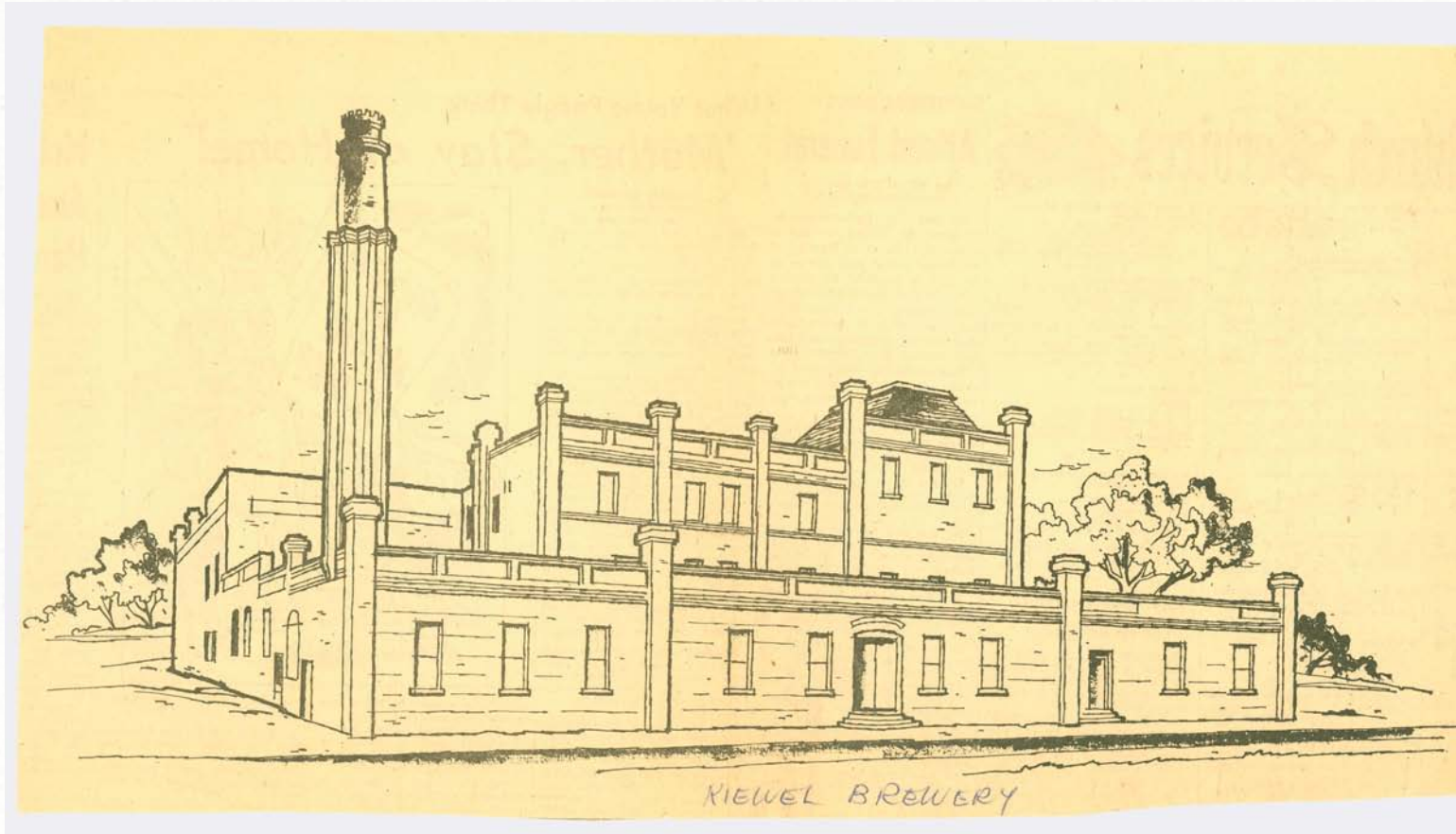


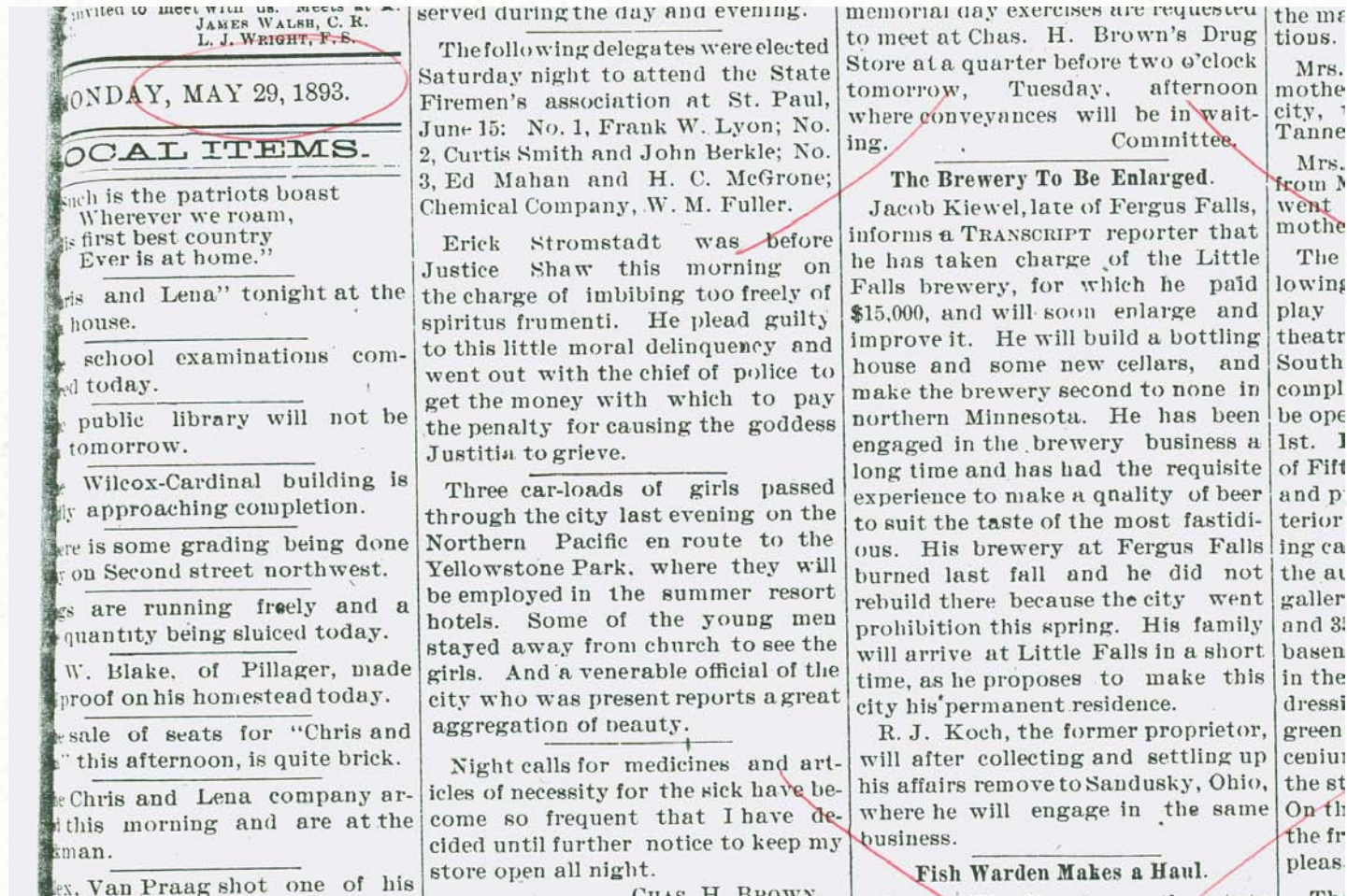
Kiewel Brewing Company

1893-1959



Slide show created by the Morrison County Historical Society, 2011.

The Beginning of Kiewel Brewing



Jacob Kiewel purchases brewery in Little Falls from R. J. Koch in 1893.

Jacob & Rose Kiewel



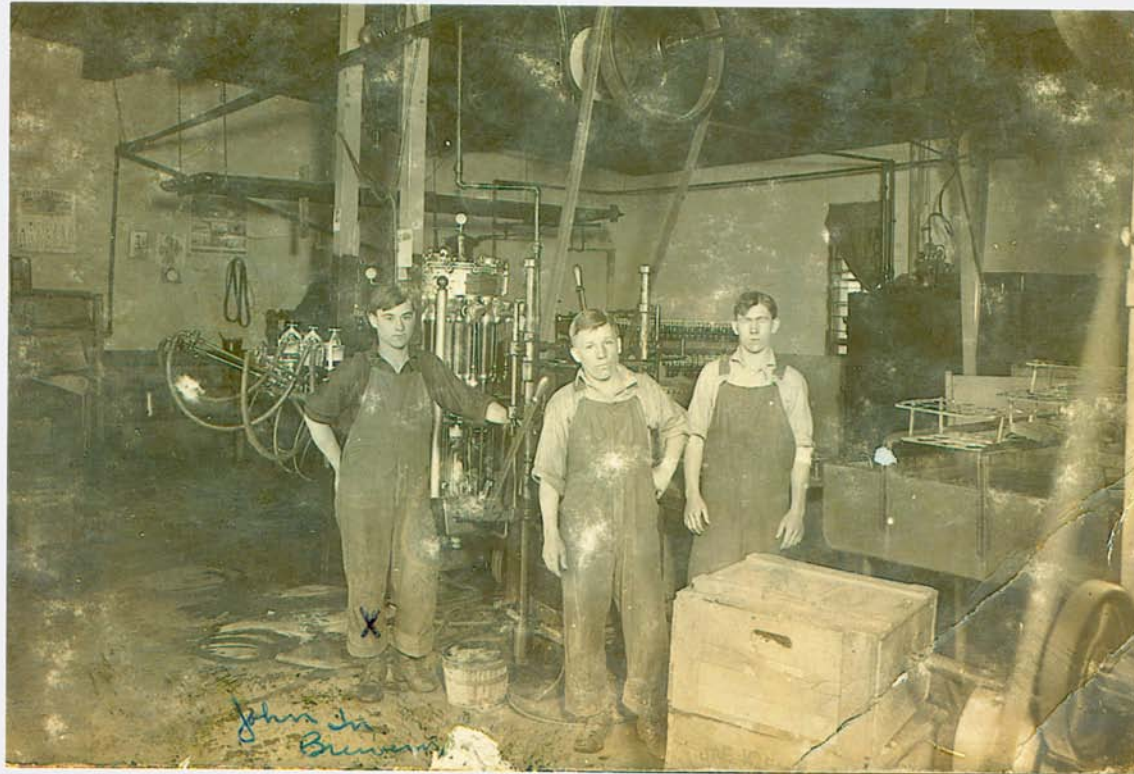
Kiewel Brewing Company Brewery



The brewery was located at Seventh Street NE in Little Falls, MN.

Kiewel Brewing Company

Inside the Brewery



John Schackman & two friends working at the Kiewel Brewery, c. 1900-1920.

Kiewel Brewing Company Products



Kiewel Brewing produced a number of different brands of beer, including White Seal, White Label, Grain Lager and White Rose.



Kiewel Brewing Products



Kiewel Brewing Beer Barrel



Kiewel Brewing

Beer Delivery Wagon



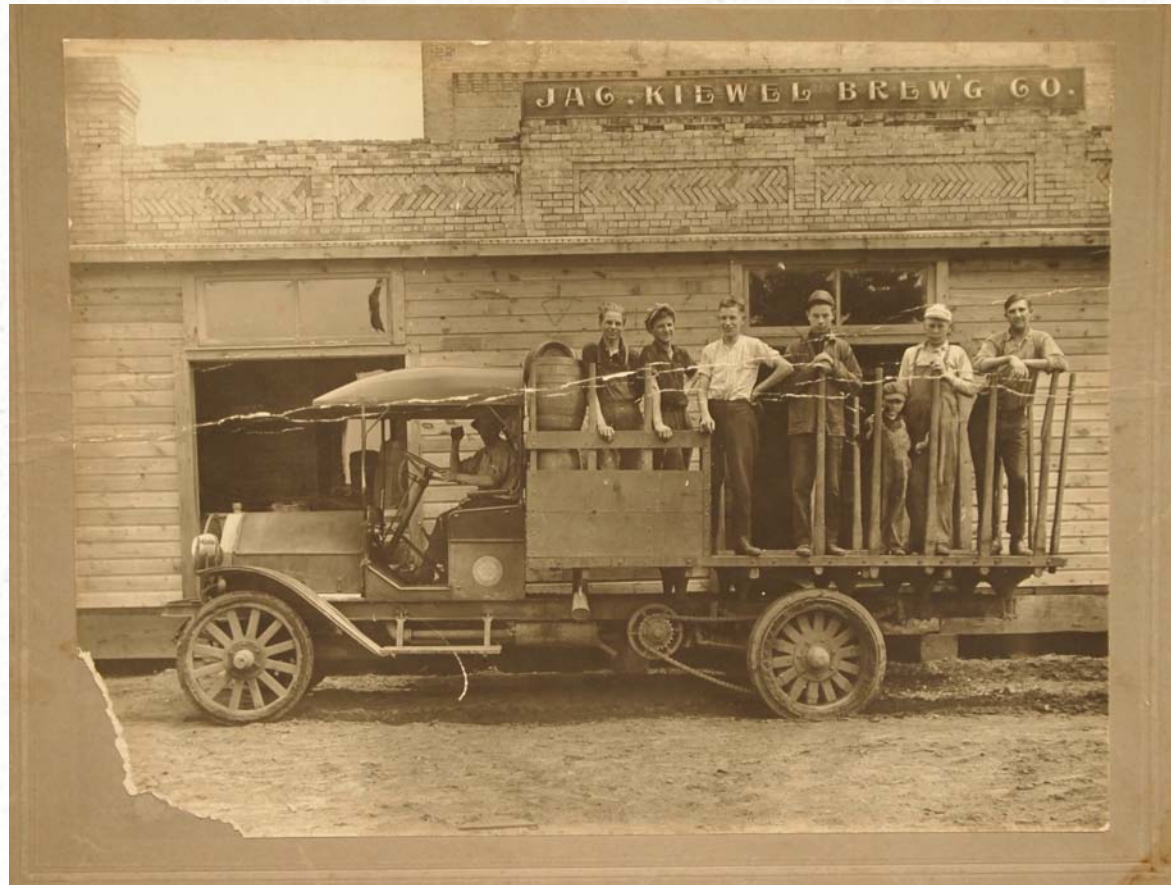
Kiewel Brewing

Beer Delivery in Winter



Kiewel Brewing

Beer Delivery Truck



Kiewel Brewing During Prohibition

Kiewel Brewing Company could no longer produce beer once Prohibition started. Rather than close the company, the brewery was retooled to produce dairy products like condensed milk, ice cream and butter.

During this period the name of the business changed to Kiewel Associated Products.

Article from the Little Falls Daily Transcript, January 20, 1920.

PRICE TWO CENTS

MILK AND CREAM PRODUCTS PLANT

KIEWEL ASSOCIATED PRODUCTS
CO. TO ENTER A NEW
LINE

WILL CONDENSE MILK, AND MAN-
UFACTURE ICE CREAM AND
BUTTER

ESTIMATED 15,000 COWS WILL BE
KEPT BUSY SUPPLYING
MILK

Machinery has been purchased and the work of preparing a building has been started for a milk condensing, and ice cream and butter manufacturing plant for Little Falls on a large scale. Supplies will also be manufactured from milk for confectioners, candy makers, ice cream makers and bakers.

The Kiewel Associated Products company has taken over all the assets of the Jac. Kiewel Brewing company, including the large brewery plant on Seventh street northeast, and will remodel the building for the purposes stated above. The three floors of the south half of the brewery will be devoted to the condensing of milk, ice cream making and the manufacture of butter. The north half of the building will be utilized for the manufacture of cereal beverages.

Under present plans it is believed that the new plant will be in operation by May 1, of this year, at least 60 days being required for the installation of the machinery necessary. Officers of the company state that only the very latest machinery has been purchased in order to give this territory one of the best plants of its kind in the country. The venture is not entirely new to the men in charge as the same persons are interested in two plants of a like nature, one at Crookston and one at Thief River Falls.

15,000 Cows Will Be Needed

A close estimate by experts has brought to light that nearly 15,000 dairy cows will be needed to keep the local plant running to full capacity. A survey of the territory that will furnish the supply has given evidence that that number of cows will be reached.

Whole Milk to Be Bought

Unlike a creamery the new plant will buy whole milk and all separating be done at the plant. For condensing purposes whole milk is needed and it is claimed that the price is far in advance of that paid for butterfat.

Agencies to Be Established

Cream stations will be opened at points not immediately adjacent to the city and the local plant will act as a centralizer for the territory.

Kiewel Brewing

Advertising & Novelties



Kiewel fan from the Prohibition era.

Kiewel Brewing

Advertising & Novelties

Standard Bottle
Beer – A True Liquid
Food

Little Falls Daily
Transcript,
May 13, 1907

- Drink -

'Standard Bottle Beer'

*Because of It's Purity. It's the New Beer,
The Beer That Everybody Drinks.*

A True Liquid Food.

The stimulant, which at the American table is rapidly superseding coffee. "Standard Beer" will not cause biliousness because of its age. Every bottle guaranteed pure. Phone us your wants.

Jac. Kiewel Brewing Co.

LFD - Monday, May 13, 1907.

Kiewel Brewing

Advertising & Novelties



Kiewel glass and bottle
openers.



Kiewel Brewing Advertising & Novelties

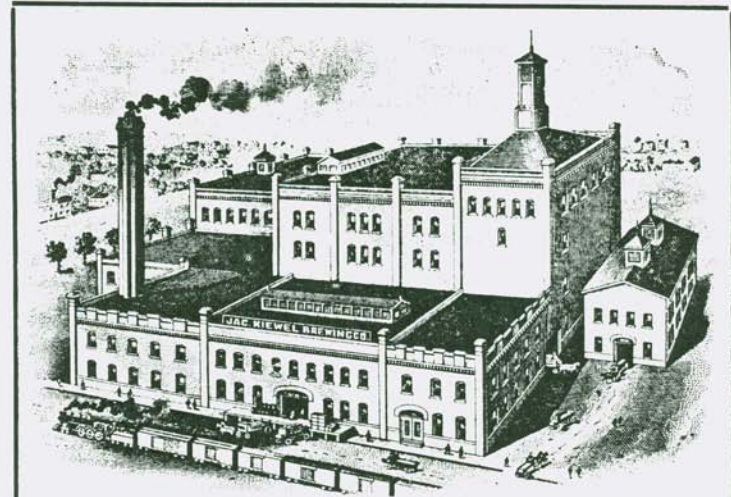
White Rose Beer ad

Little Falls City Directory
1916-1917

78

L. Falls 1916-17 City Directory

LITTLE FALLS



THE HOME OF WHITE ROSE BEER

A beverage possessing undisputed food qualities.

The result of a generations thorough application to every phase of the art of perfect Beer brewing.

JAC. KIEWEL BREWING CO.

LITTLE FALLS, MINNESOTA.

Kiewel Brewing Advertising & Novelties



Kiewel Standard Beer Tray

Kiewel Brewing Advertising & Novelties

White Rose Beer tray
Kiewel Brewing Company



Kiewel Brewing Advertising & Novelties

Kiewel Beer ad

"An aid to digestion"

Little Falls Daily Transcript
May 17, 1900

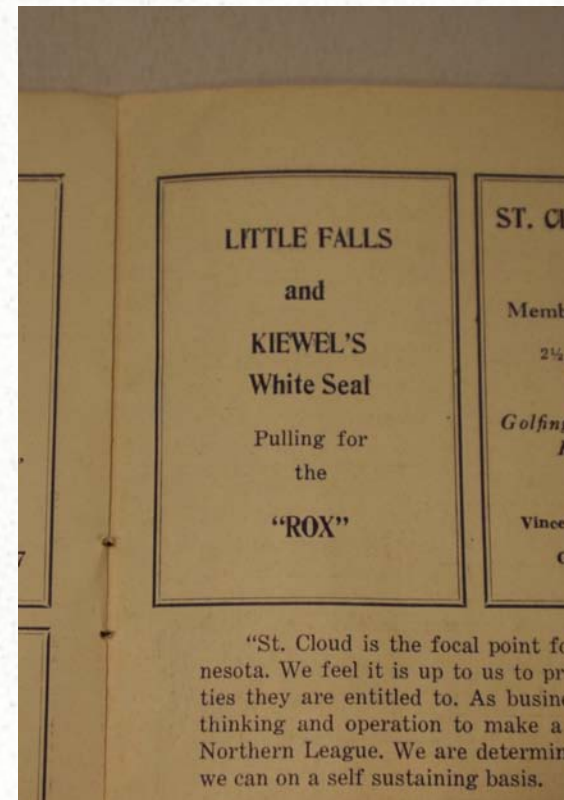


ONE SIP ONLY
—OF THE—

JAG. KIEWEL BREWING CO.'S

Beer suffices to prove its quality. It is a triumph of brewing, and further demonstrates the value of perfect storage conditions. For table and family use it is the beer of beers, and all consumers vote it unbeatable. As an aid to digestion, tonic and daily beverage it possesses special value. Its popularity could not rest on better grounds.

Kiewel Brewing Advertising & Novelties



Baseball program with Kiewel advertising, 1946.

Kiewel Brewing

Advertising & Novelties



Kiewel Brewing Company

The End

Jacob Kiewel died in 1928, leaving his sons to continue the business. This they did until 1959, when they leased the brewery to the Grain Belt Brewery Company. Grain Belt leased the building until 1961 after which it was primarily vacant until 1970.



Louise McGivern, a daughter of Jacob Kiewel, is pictured in this newspaper article from the Little Falls section of the St. Cloud Daily Times, Nov. 30, 1982.

Kiewel Brewing Company

Demolition

Four students from the Little Falls High School started a petition to have the Kiewel Brewery torn down in 1972. They were concerned about the hazard created by the abandoned building. Their attempt was apparently unsuccessful.

The City of Little Falls purchased the building in 1982 with the intent to use the site for a senior center. Demolition occurred in 1983.



People gathered to witness the Kiewel Brewery demolition, 1983.

Kiewel Brewing Company

Demolition



Kiewel Brewery demolition begins, 1983.

Kiewel Brewing Company

Demolition



Kiewel Brewery reduced to rubble, 1983.