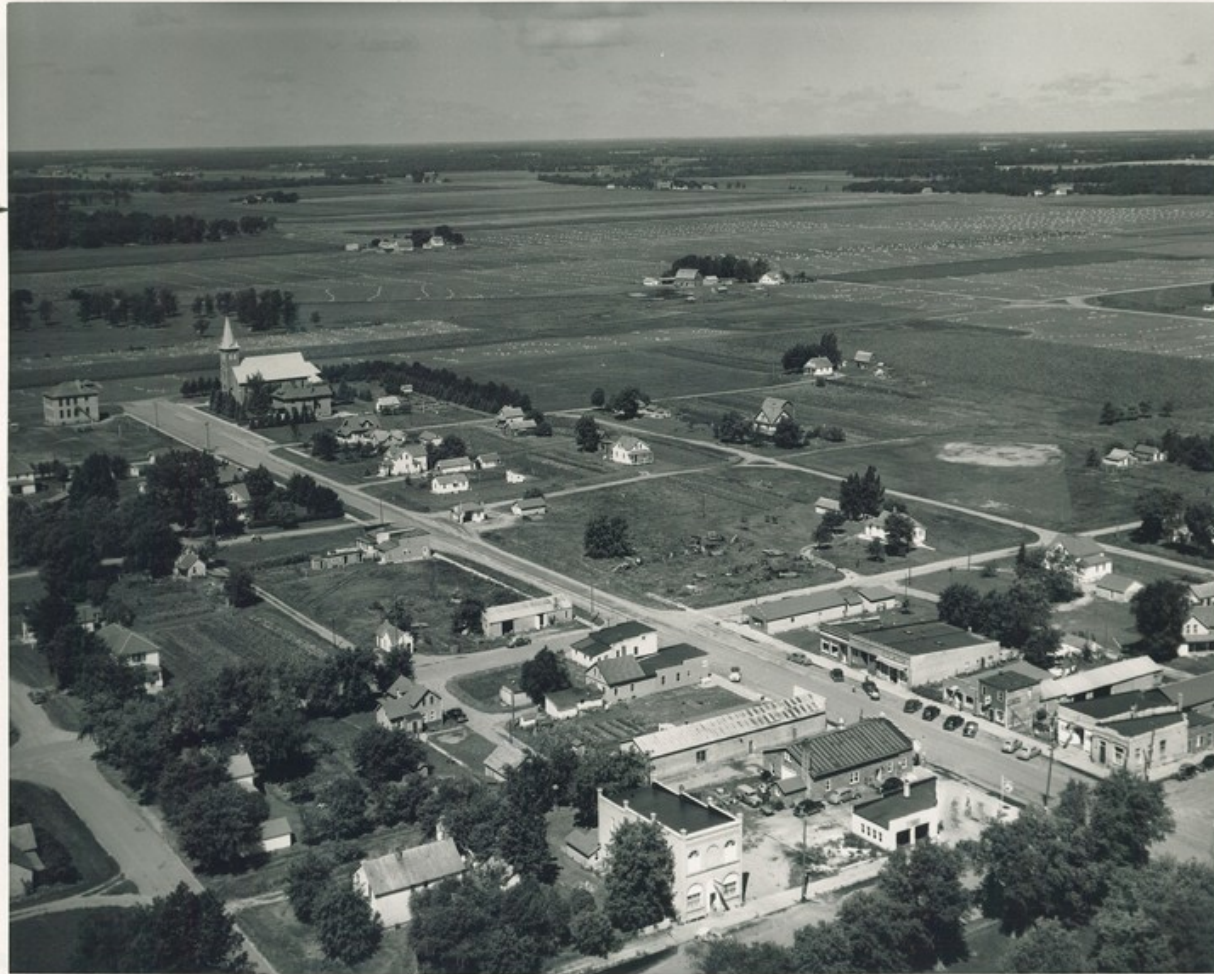


The Changing Face of Morrison County Communities

How do these communities look today as compared
with the photos presented here?

By the Morrison County Historical Society
2014

Bowlus, MN - 1951



Canton House, Cushing, MN



Canton House
Cushing

Cushing, MN



Center Street, Royalton, MN - 1914



Center Street, Royalton, Minn.

Main Street, Royalton, MN - 1911



Frederick Ayer Home & Barn, Belle Prairie, MN



School District 1, Belle Prairie, MN



Upsala, MN - 1914



Edden Farm, Green Prairie Township



Church of
the Woods
– Union
Church,
1900

A.K. Hall Farm, Green Prairie, MN 1893



Freedhem, MN – Looking East



Looking East- Freedhem, Minn.

Freedhem, MN – Looking West



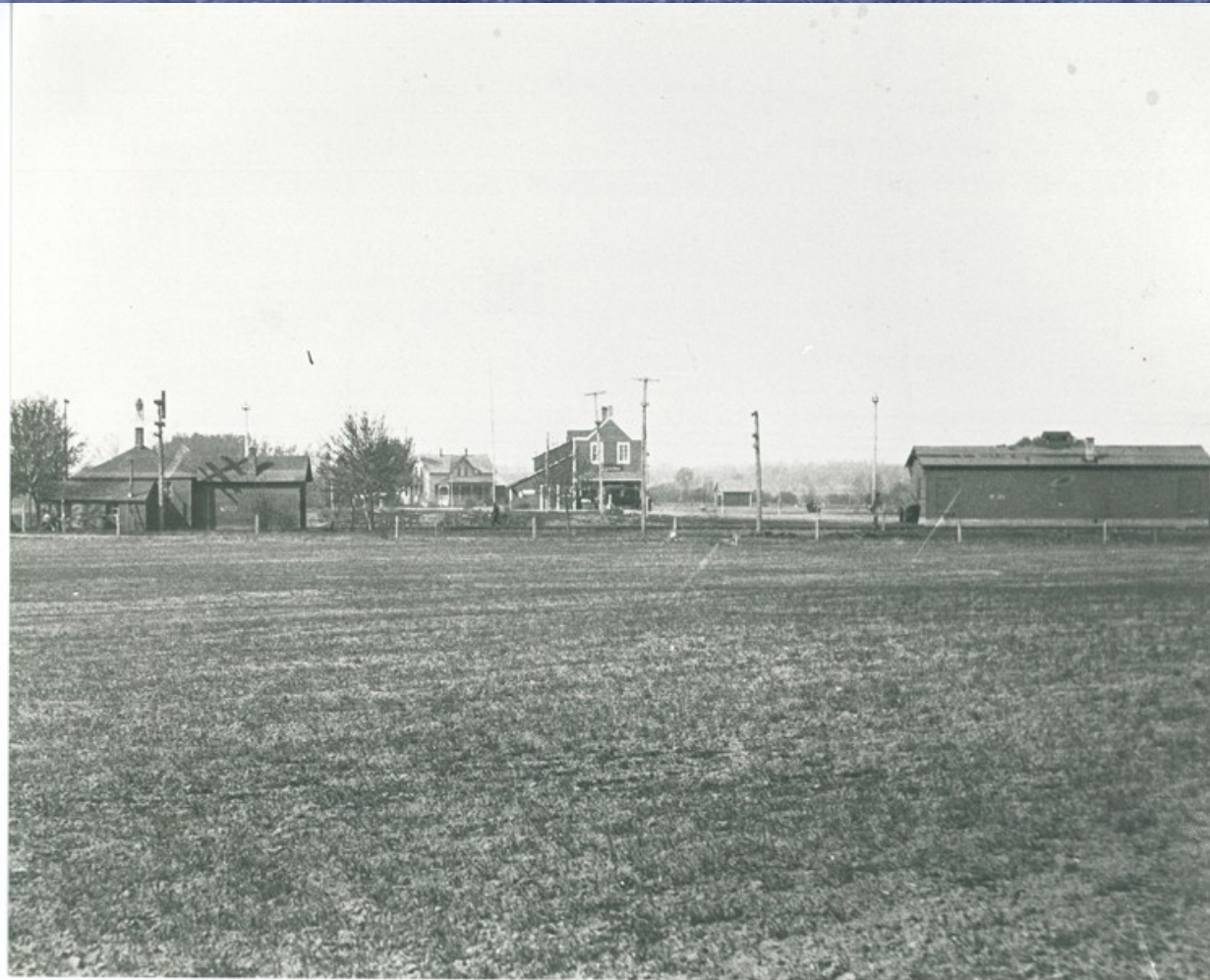
Fort Ripley - 1868



Old Fort Ripley Buildings



Darling, MN – c. 1922/23



Gilbert Post Office, Ripley Township - 1967



Main Street, Lincoln, MN – c. 1920



Buh Town Hall - 1999



Clough Town Hall - 1980



Frank Mischke Implement Shop, Buckman, MN



Motley, MN - 1920



Motley-1920

Major Ashley Morrill's Home Little Elk, MN - 1905



Pierz, MN - 1924



STREET SCENE - PIERZ, MINN.

Randall, MN – c. 1900



Randall, MN – 1916



Swanville, MN – before 1900



Swanville, MN – Looking West - 1912



Wanted: Community Photos

Due to the rapidly changing nature of communities, the Morrison County Historical Society is always seeking past and current photos of Morrison County's towns to add to its collections.

If you have photos you'd like to donate to the MCHS collection, please call 320-632-4007 or stop by The Charles A. Weyerhaeuser Memorial Museum in Little Falls, MN.