

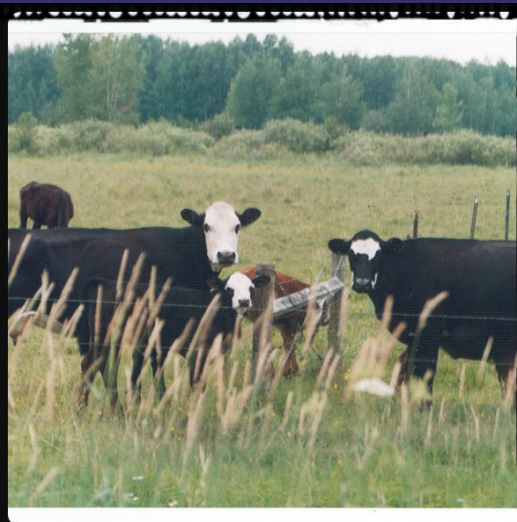
Buttered Up!

Creameries of Morrison County



By the Morrison County Historical Society, 2013

There Wouldn't Be Creameries Without Cows



Left photo: Cow being milked with pipeline milking set-up in barn at Don Carlson farm, Royalton, MN.

Lower right photo: Don Carlson with young stock. Photos by Deb Collis, 2003.

Upper right photo: Cows in the field, Green Prairie, MN. By Pamela Wolters, 2003.

Milking



Milking cows used to be done by hand. Now farmers have equipment to make the process clean and efficient.

Linda & Don Carlson show parts of the process, including the bulk milk tank, at their farm in Royalton, MN.

Photos by Deb Collis, 2003.

Cream Separators



De Laval
Cream
Separators
at the
Morrison
County Fair,
Motley, MN,
September
1911.

Cream Cans

When we milked the cattle, we didn't have any place to keep the cream that they separated. So they had to put it in cream cans – metal cans – and put it in the stock tank where the cows would drink out of on the outside of the barn. It had a little cooling tank that went from the inside of the barn to the outside and we would pump water from the well through this small tank. That would cool down the cream that they separated, so that it wouldn't spoil until they could haul it to the creamery the following day.

From Bert Rudie's Memories

Hauling Cream to the Creamery

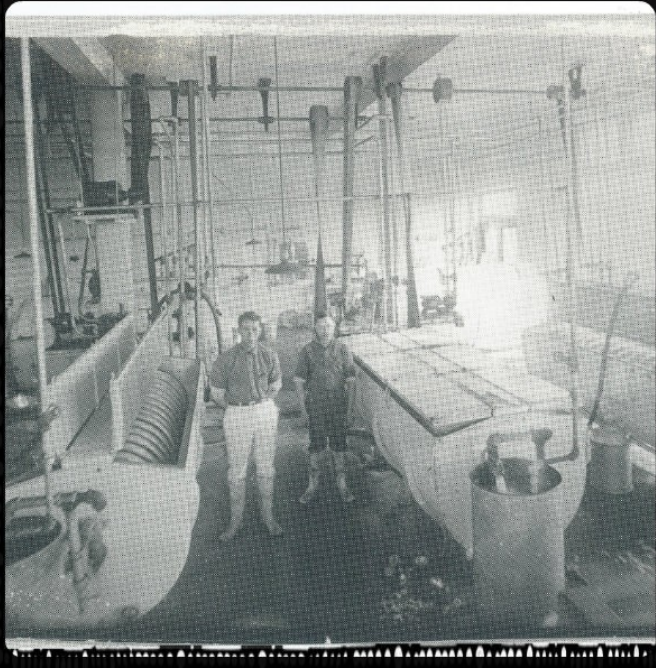
They used to haul cream every day. Usually several of the farmers would get together and they would take turns transporting these cans of cream over to the creamery where they would make butter out of it. When they would make butter, the by-product was buttermilk, which in those days they didn't do anything with except send it back in your cream can and you would feed it to the hogs.

From Bert Rudie's Memories

Pierz Creamery

“Pierz had a creamery once, north of Hartmann's store, but it went into the red and closed.”

From “Memories, Memories, Memories”
by Gertrude Feucht, c. 1980



Top: Pierz Co-op Creamery, c. early 1920s.

Bottom: Interior of Pierz Co-op Creamery, 1923. Left – Steve Bayer, right – Alphonse Kleinschmidt.

Flensburg Creamery



Flensburg Co-op Creamery,
Hardware and Grocery Store, 1987.

Working at the Flensburg Creamery

As a young man, Doug Ploof worked at the Flensburg Creamery with Larry Siemers. They used to drive around to farms to pick up full cream cans, which were very heavy. Doug used his knee to help lift cans into the side door of the truck. Cans were strapped in to keep them from moving around. They were off-loaded through the back door of the truck onto a conveyor into the creamery. The cans were labeled "Flensburg Creamery." During Doug's last year at the creamery, he and another guy painted the building. Doug earned enough money to buy his first car.

Doug Ploof's creamery memories as
told to Mary Warner, Sept. 2013

Motley Creamery



Motley Creamery with Mr. Santo in the doorway.

The Motley Co-operative Creamery formed in 1908 and operated until the mid-1960s. For a time, it was affiliated with Land O' Lakes. Photo courtesy the Motley Area Historical Society from "The Right Side of the River: Motley, Minnesota" by Ella Topp.

Sobieski Creamery



Interior & exterior views of Sobieski Co-op Creamery. Four photos by Deb Collis, two by Pamela Wolters, 2003.

Ramey Creamery



Ramey Farmers Co-op
Creamery, photos by
Mary Ann Watercott,
2003.

Cushing Creamery



The Cushing Creamery was founded c. 1920, with the first creamery burning in the late 1920s. It was rebuilt in 1928 by A. J. Pogatchnik and was still in operation in 1950. Photo dated 1942. One of the people is identified as Elsie Gregerson.

Lastrup Creamery



Lastrup Co-op Creamery, photo by Ruth Virnig, 2003.

Freedhem Creamery



The Freedhem Creamery Company incorporated on April 15, 1904 and later became known as the Freedhem Creamery Association. According to the bylaws, "All milk delivered shall be sweet and in good condition ..."

Freedhem Creamery & Locker, left photo by Yvonne Kalahar, 2003. Right photo undated.

Randall Creamery



Randall Creamery,
2003. Black & white
photos by Pamela
Wolters, color by Mary
Warner.

Recitals at the Randall Creamery

Elise Donohue remembers her mother, Sarah-Maud, taking her and her sister Lucy to recitals at the Randall Creamery while the family was on its way to Lake Alexander. In particular, she remembers a piano recital by Marilyn Cameron on the second floor of the creamery in the late 1940s.

Little Rock Creamery



The Little Rock Creamery was founded in 1913. In 2003, the creamery was known as the Sunrise Ag Cooperative. Photo by Pamela Wolters, 2003.

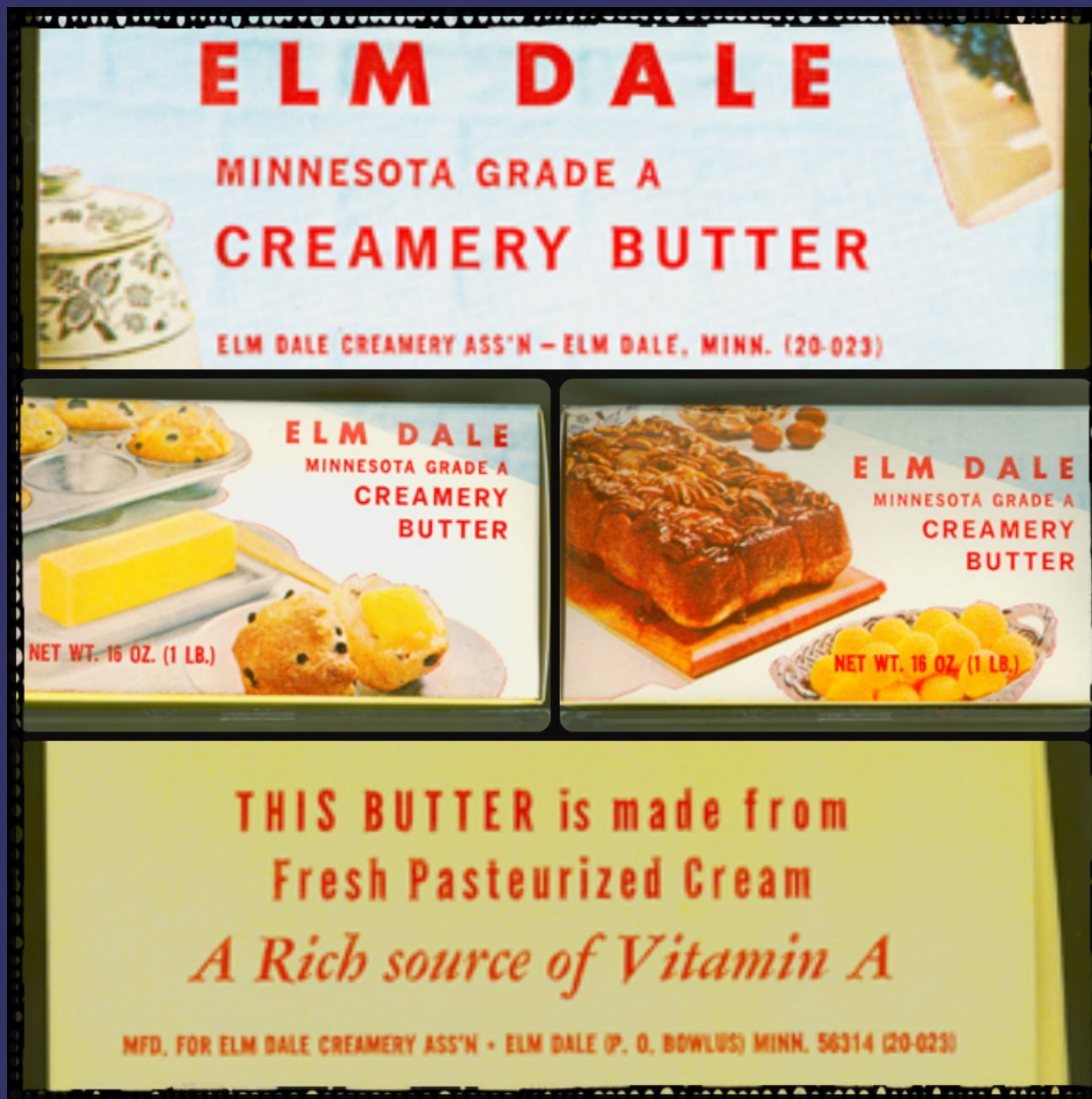
Elmdale Creamery

The Elm Dale Creamery Association incorporated in 1908 as the Cloverleaf-Elm Dale Creamery Association. Cloverleaf was dropped from the name in 1916. The organization celebrated its centennial in 2008.

Elmdale Creamery & Locker Plant, photos by Deb Collis, 2003.



Elmdale Butter Box



From 3D collections of
the Morrison County
Historical Society.

Three Buttermakers



Left to right: John Erickson (Swanville), Arnold Hoffahl (Randall), and Oscar Strand (Freedhem), undated.

Swanville Creamery



Swanville Creamery,
undated.

West Side Creamery



West Side Co-operative Creamery Association, Little Falls, MN.
Founded in 1923, it was first located in the back of the Engstrom building. In 1970, it merged with Mid-America Dairymen, Inc.
Photo on left dated c. 1920s, photo on right dated 1968.

Sanitary Milk & Ice Cream Company

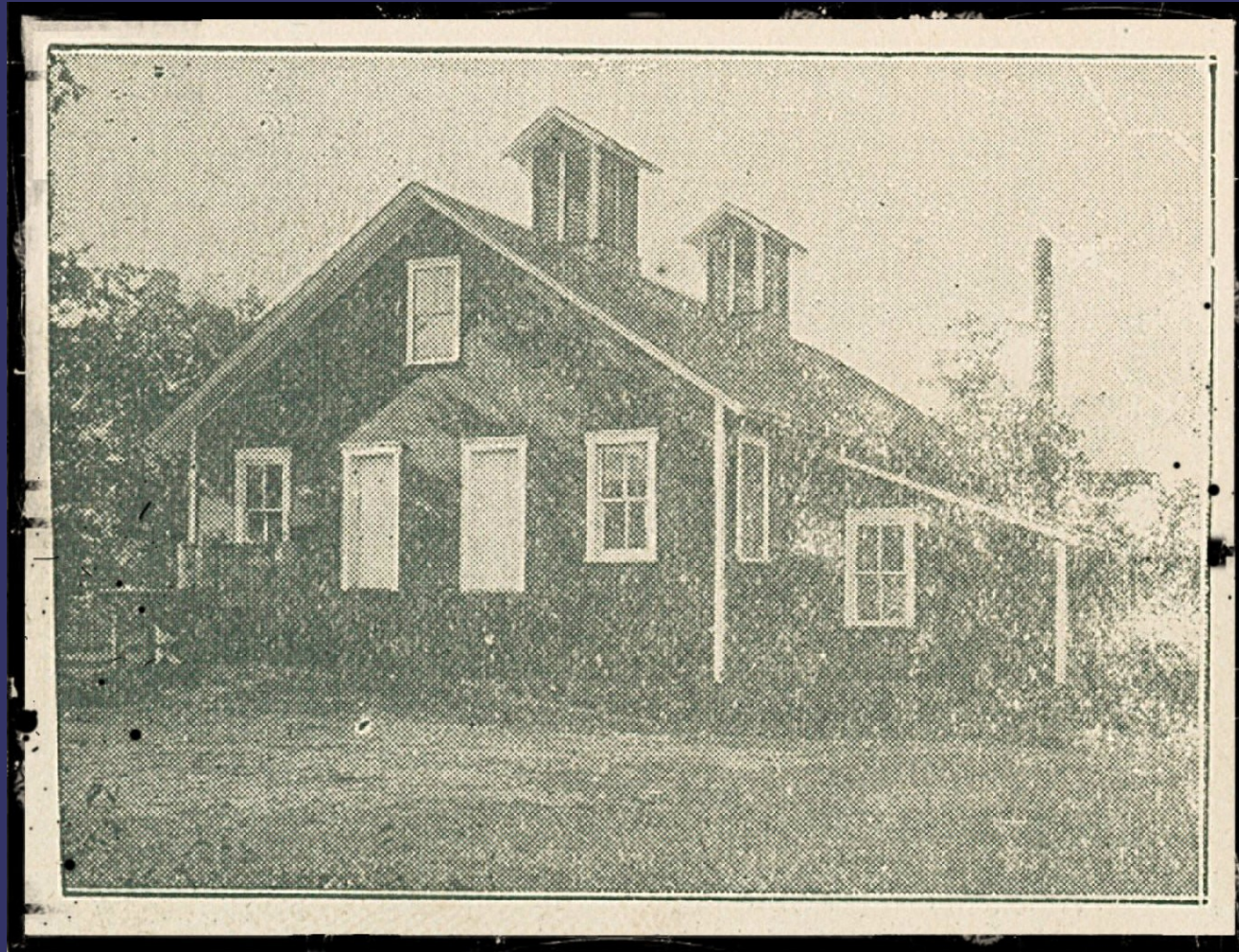
Sanitary Dairy was started by Leonard Sobiech in 1930 in the north portion of the West Side Cooperative Creamery. In 1933, he sold his milk bottling equipment to Louis Welna and Vincent Young and his ice cream equipment to William Reintjes. In 1935, Young got out of the business and Welna and Reintjes teamed up to form the Sanitary Milk & Ice Cream Company. The business was purchased by George Melby and William Anderson in 1948.

Buckman Creamery



Interior of Buckman Creamery, undated.

Royalton Creamery



The Acme Creamery in Royalton was formed by a group of the town's businessmen and operated by J. H. Russell. The building was destroyed by fire after operating for a number of years. Photo from Frank B. Logan's "Historical Sketches of Royalton and Vicinity," 1930.

Upsala Creamery



Upsala Co-op Creamery & Land O'
Lakes Feed, photo by Dan
Hovland, 2003.

Land O' Lakes Creamery

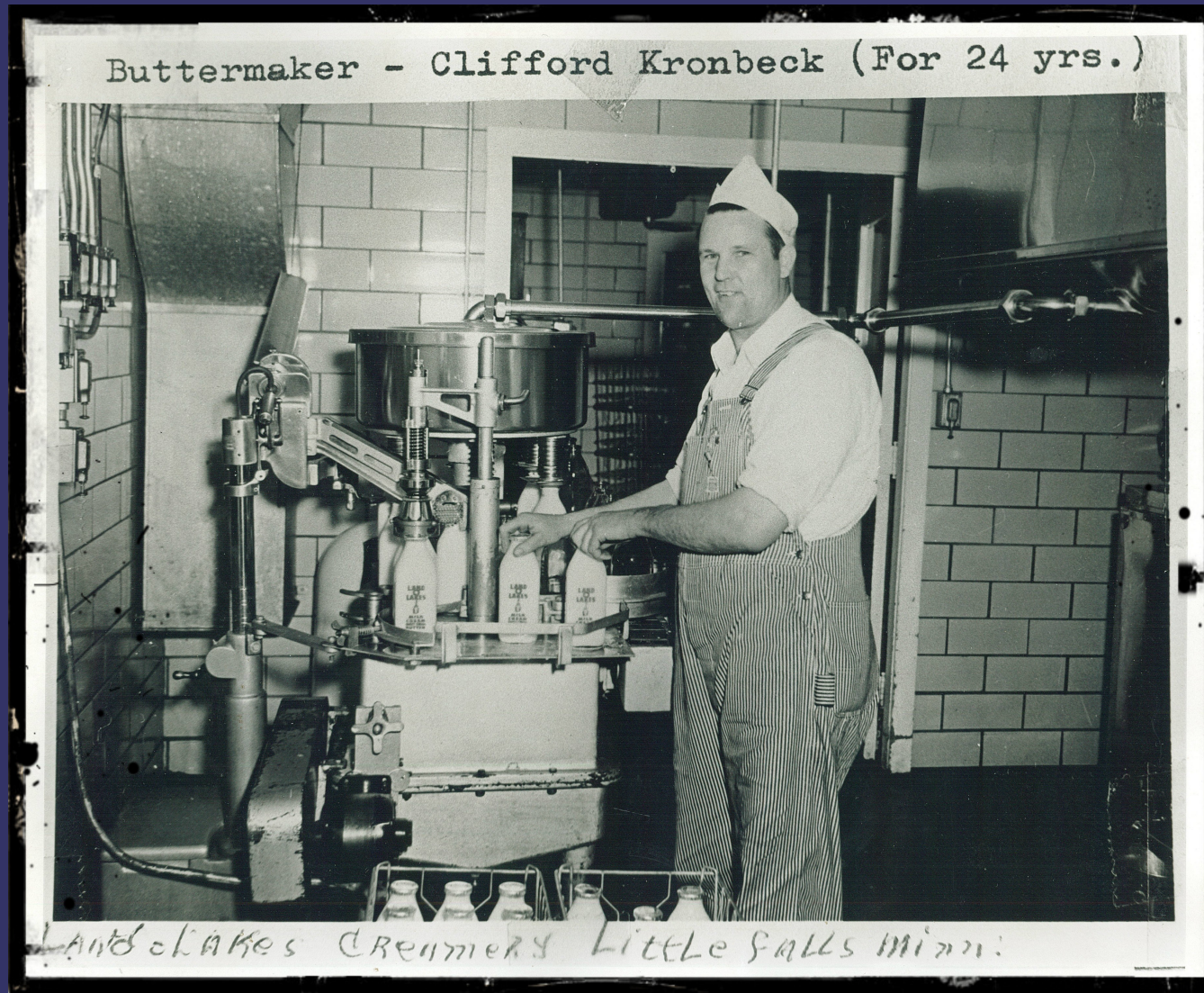
The Little Falls Farmer's Co-operative Creamery was founded in 1916 and purchased an existing creamery on the east side of Little Falls from Frank Moore. It joined Land O' Lakes in 1921. A new building was built for the creamery c. 1925. The creamery closed in 1962.

Land O' Lakes Creamery, Little Falls, MN. Five unidentified men posing with their trucks. Undated.



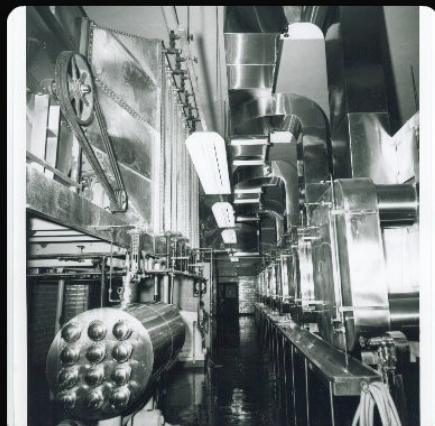
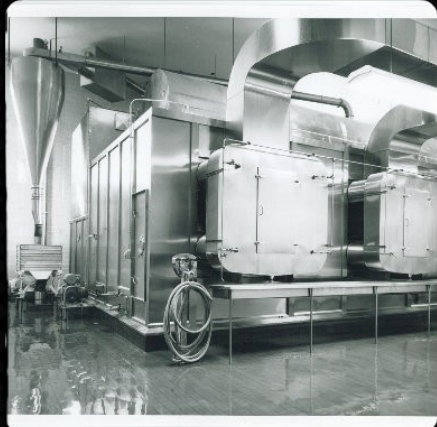
•Land O' Lakes at L.F.

Clifford Kronbeck, Buttermaker



Clifford Kronbeck, buttermaker for the Land O' Lakes Creamery, Little Falls, MN, undated.

Unidentified Creamery



This series of creamery photos was taken by Gordon Guy in the late 1950s. Unfortunately, the creamery is unidentified. Could it be the West Side Creamery in Little Falls?

Creameries Blending

Feed mills, locker plants and other agricultural businesses were often associated with creameries. This Little Falls business is now owned by Centra Sota Cooperative, which started out as a dairy cooperative.

Creameries Blending, Inc., Little Falls, MN, photos by Mary Warner, 2003.



Oak Grove Transfer Station



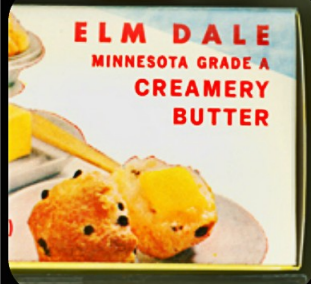
This small milk transfer station allowed milk haulers to drop off and pick up loads of milk. The building was torn down a few years ago and the lot used for a house. Oak Grove Milk Transfer Station, Little Falls, MN, photos by Mary Warner, 2003.

From Creamery to Home



Businesses like Yoerg's Dairy delivered milk directly to customers. Stanley & Harold Yoerg founded the business in 1915 in Little Falls, expanding to horse-drawn and truck deliveries as the years passed. The business was sold to Purity Milk in the mid-1960s. Photo c. 1955.

What Are Your Creamery Memories?



Share them with the
Morrison County Historical
Society by writing them
down and emailing them to
mocohistory@gmail.com or
call MCHS at 320-632-4007.