

Brick by Brick

Building Community Development Through History

Hosted by the Morrison County Historical Society
April 2021

Brick 1, April 1 - Funding the Upkeep of Existing Buildings:
The Little Falls Redevelopment Program

Brick 2, April 8 - Tax Incentives for History:
The Importance of Historic Tax Credits

Brick 3, April 15 - History Is Infrastructure:
The Role of History in Community Development

Brick by Brick

Building Community Development Through History

Hosted by the Morrison County Historical Society

Brick 3 - April 15, 2021

History Is Infrastructure: The Role of History in Community Development

Moderator: Amy Piekarski, Community Development Administrator, Sourcewell

Presenters:

Morrison County Historical Society

Mary Warner, Executive Director

Ann Marie Johnson, Preservationist

St. Cloud State University

King Banaian, Dean, School of Public Affairs

Camp Ripley Sentinel Landscape

Todd Holman, Coordinator

Minnesota Pollution Control Agency

Melissa Wenzel, Built Environment
Sustainability Administrator

Brick by Brick

Building Community Development Through History

Hosted by the Morrison County Historical Society
April 2021

How History Organizations Support Community Development

1. Helping communities identify important historic & cultural assets
2. Identifying historic resources prior to major construction projects (Section 106 letters)
3. Assisting municipalities with research needed for preservation projects (historic districts, redevelopment projects)
4. Helping communities with signage & marketing materials based on heritage tourism
5. Helping owners research building (homes & businesses) history
6. Providing resources & advice for National Register nominations
7. Providing internships for college students
8. Helping authors & creators with research for publications & projects
9. Writing history & providing programs that inspire people to connect to the community
10. Partnering with other history & culture organizations to create a stronger sector
11. Providing research expertise for resources outside our institutions
12. Providing education in preservation techniques
13. Generating direct economic impact through heritage tourism
14. Synthesizing the past to point the way toward future opportunities

History museums & organizations, their collections & staff expertise are an important part of the infrastructure of a community & should be adequately supported in order to continue providing these assets.

What's inside the Morrison County Historical Society's Weyerhaeuser Museum



Photo collection



Buckman Building postcard

What's inside the Morrison County Historical Society's Weyerhaeuser Museum



Newspapers



Compiled Research

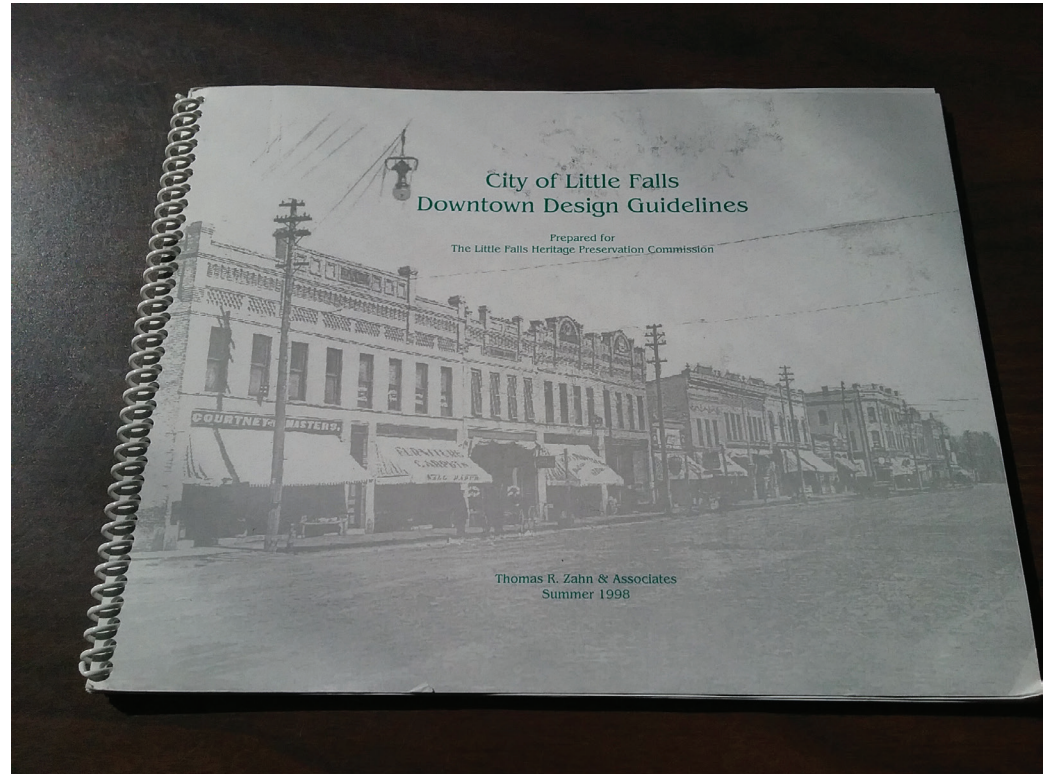


Plat Books

Is used outside the museum for

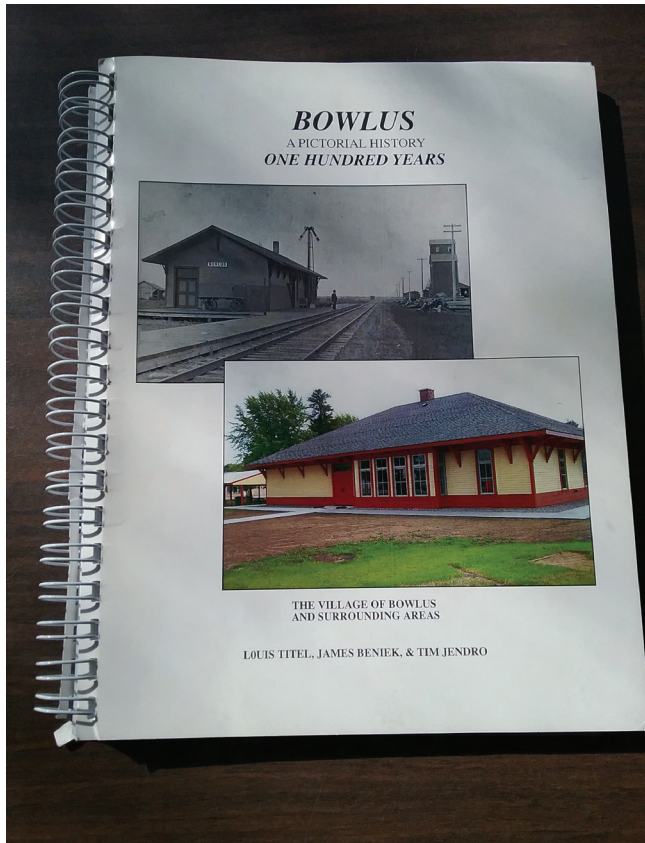


Historic Morrison County Courthouse saved through efforts of MCHS & put on National Register.

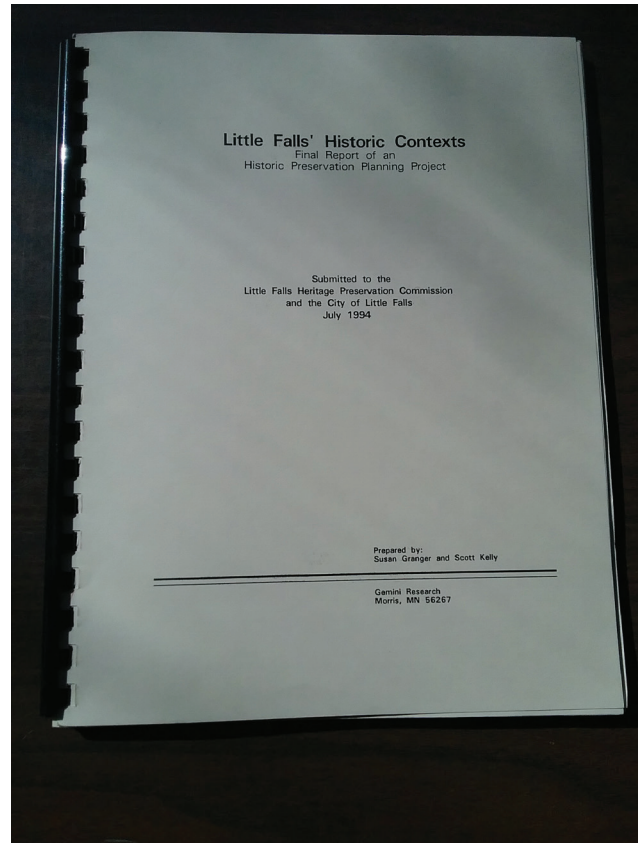


City of Little Falls Downtown Design Guidelines created through research at MCHS.

Is used outside the museum for



Bowlus history book created through research at MCHS.



Survey of historic properties in Little Falls for HPC created through research at MCHS. Now used for further research.

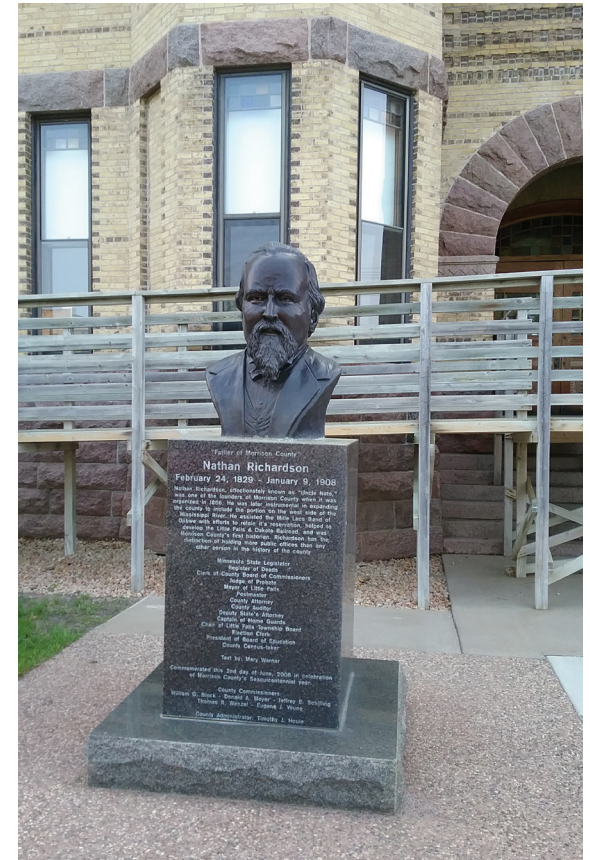


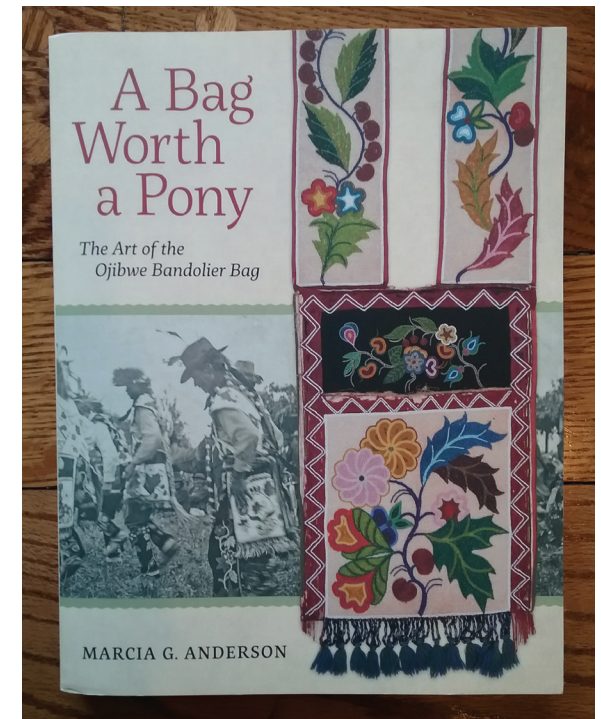
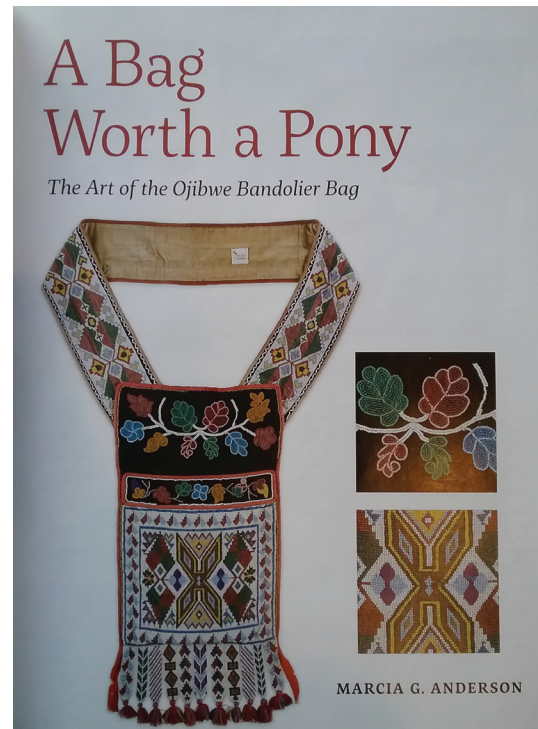
Photo from MCHS files used to create bust of Nathan Richardson, "Father of Morrison County."

Even the 3-dimensional artifacts serve as history infrastructure for projects outside the museum.

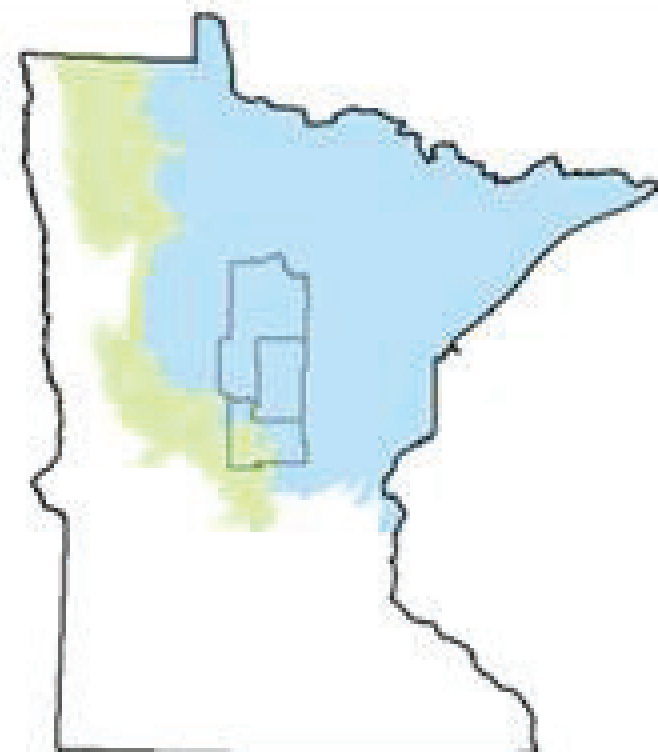
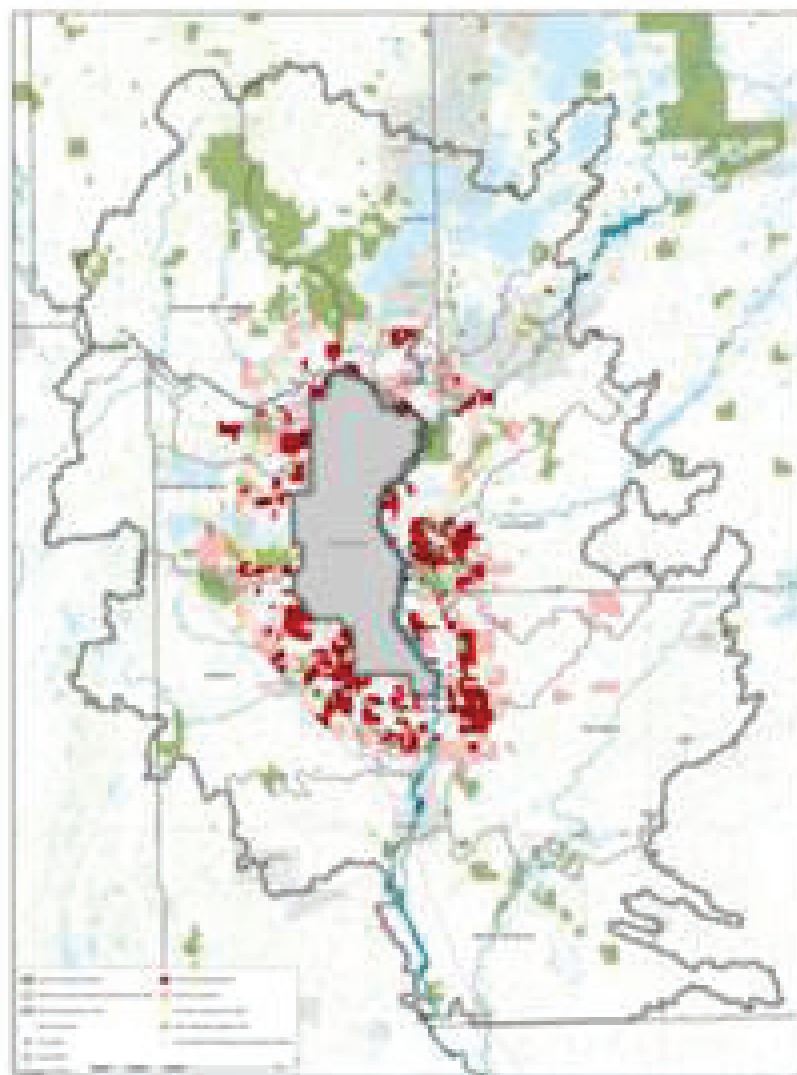


Ojibwe bandolier bag presented to Nathan Richardson by Chief Shaboshkung for his assistance in helping the Mille Lacs band deal with timber thieves.

Featured in Marsha Anderson's book, "A Bag Worth a Pony," about the art of bandolier bags.



SENTINEL LANDSCAPES



CAMP RIPLEY
SENTINEL LANDSCAPE





History is Infrastructure: The Role of History in Community Development *Sustainable Building Material Management*

Melissa Wenzel

Built Environment Sustainability Administrator

Our sector's impact

- EPA estimates that 600 million tons of C&D debris were generated in the United States in 2018, which is **more than twice** the amount of generated MSW
- "A third of existing buildings will be demolished by 2050." *Architecture 2030*



Quick history of deconstruction and reuse

- For all of history we deconstructed.
- Demo became the standard only after WW2.
- Architectural salvage continued for high value materials.
- Reuse languished. Until reuse centers and deconstruction activities restarted in the 90's.
- Reuse is set to be the next wave!



Wood grain elevator (Ormsby)



Duluth Deconstruction Project



Saint Louis Park Nature Center deconstruction

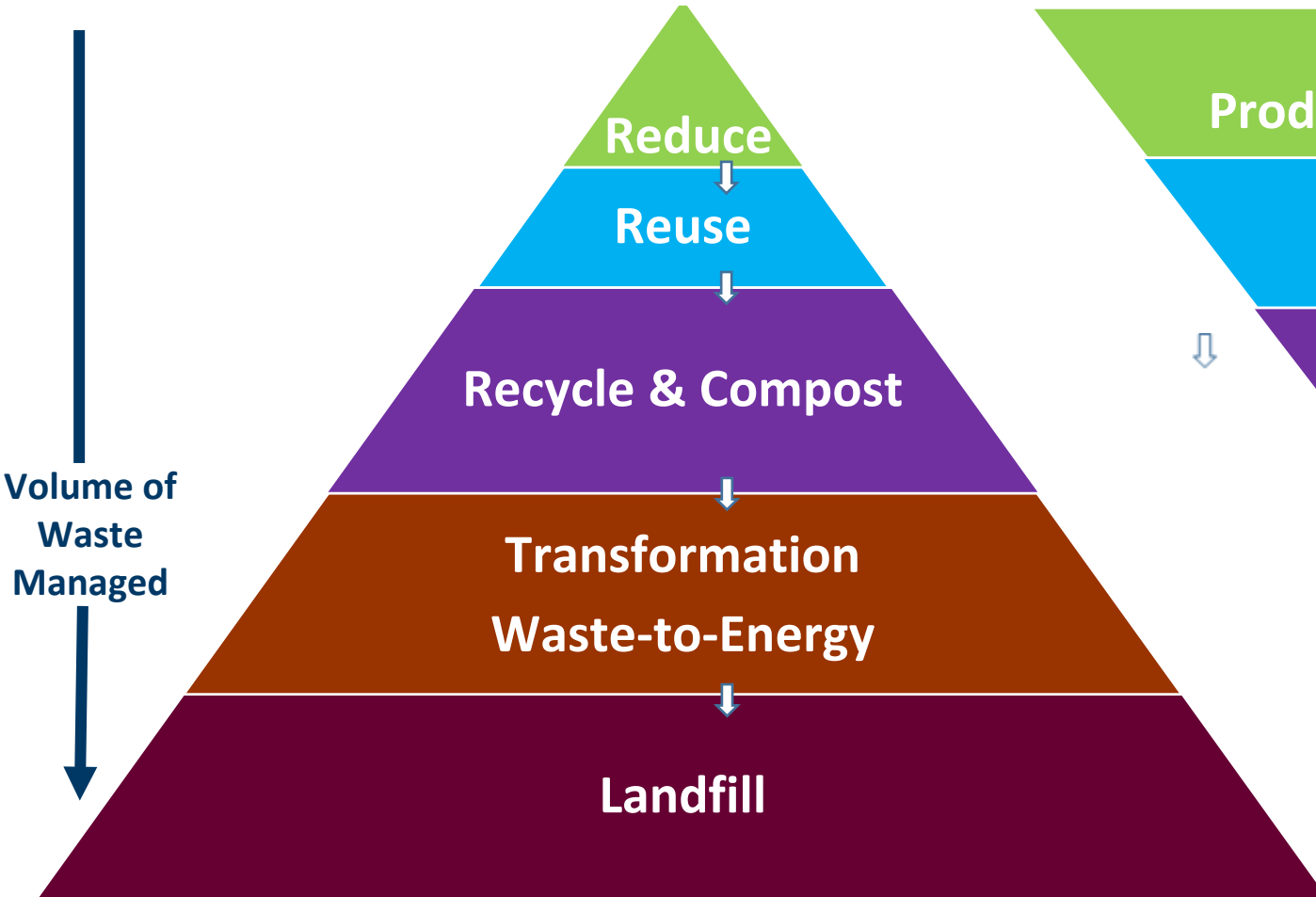


Why Old is Green – Sustainability in Older Homes

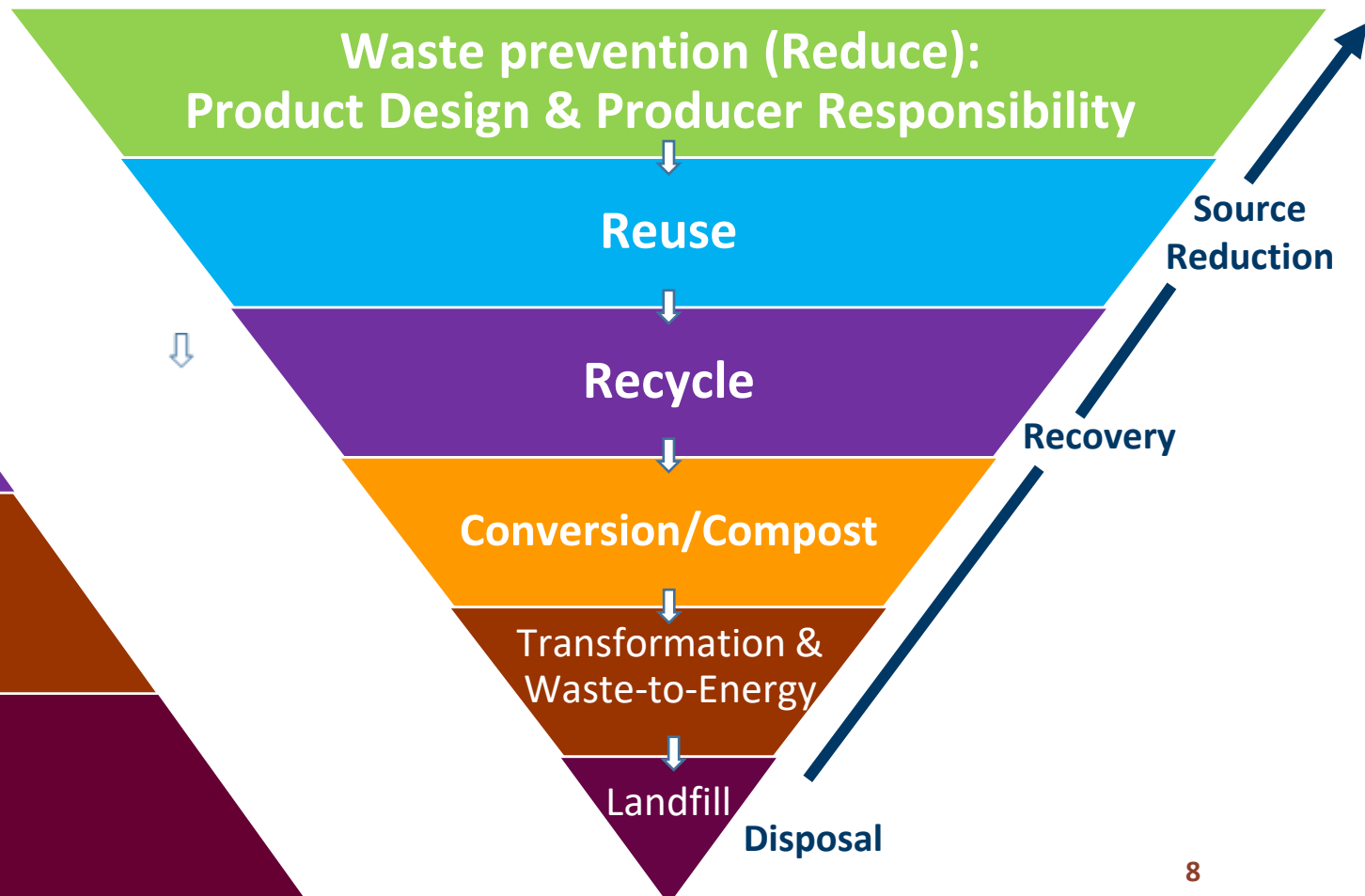


Material Management Hierarchy

Traditional Waste Hierarchy



New Waste Management Paradigm



MN top system-change recommendations

1. Establish a statewide, state-funded deconstruction training program
2. Create incentive for reuse/preservation of (energy efficient) buildings
3. Create a deconstruction ordinance template that cities can adopt
4. Create, implement, & enforce diversion requirement of C&D waste
5. Create an incentive that encourages reused, more repairable, and/or reusable materials for new construction & building renovations.

Thank you!

Melissa Wenzel,
Built Environment Sustainability Administrator

melissa.wenzel@state.mn.us



How does an economy grow?

Each layer of a city builds upon what was there last.

Oxcart Trail built for commerce from up north (around 1820)

River passage in early 1850s.

Granite in 1868.

By 1902, state had 27 granite quarries, mostly in Benton, Sherburne and Stearns cos.

Eventually create tools to cut, polish, sculpt, engrave, etc.

Skills developed by citizens transfer to other industries, like automobiles, lens grinding.



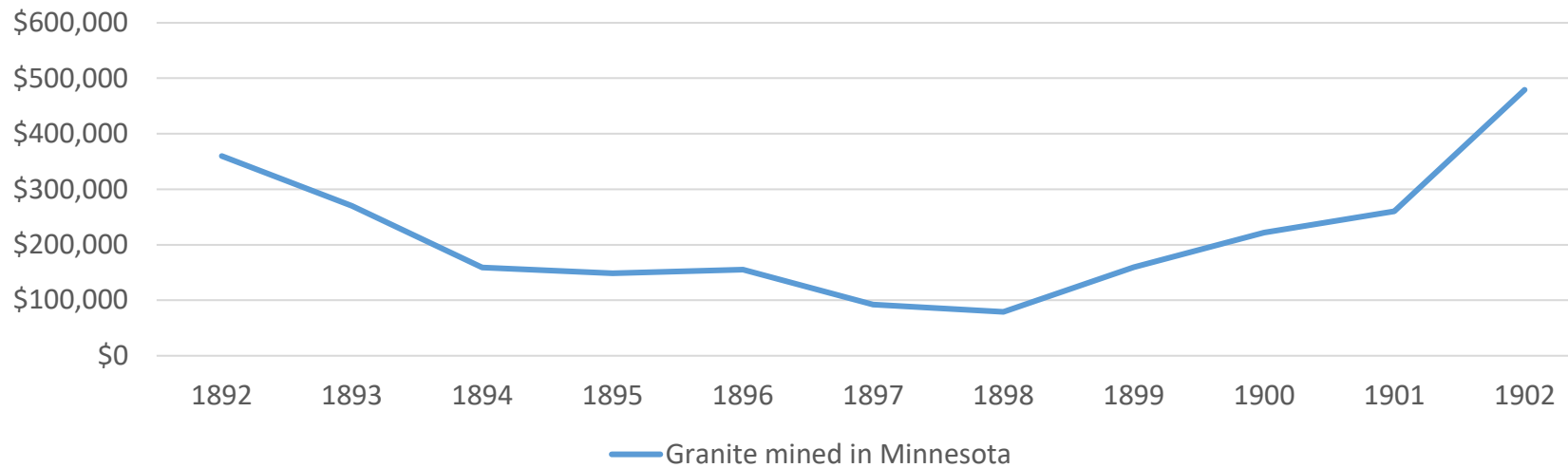
ST. CLOUD STATE
UNIVERSITY

SCHOOL OF PUBLIC AFFAIRS

Decline in 1890s due to Panic, restored by 1902

	1900s	1919
Value of mining	\$25,729,545 (1902, \$487,989 in granite)	\$128,377,174 (\$3,617,633 in granite)
Manufactures based on mined products	\$28,443,297 (10.8% of all manufactures, 1900)	\$58,074,000 (17.3% of all manufactures, 1919)

Value of granite mined in Minnesota

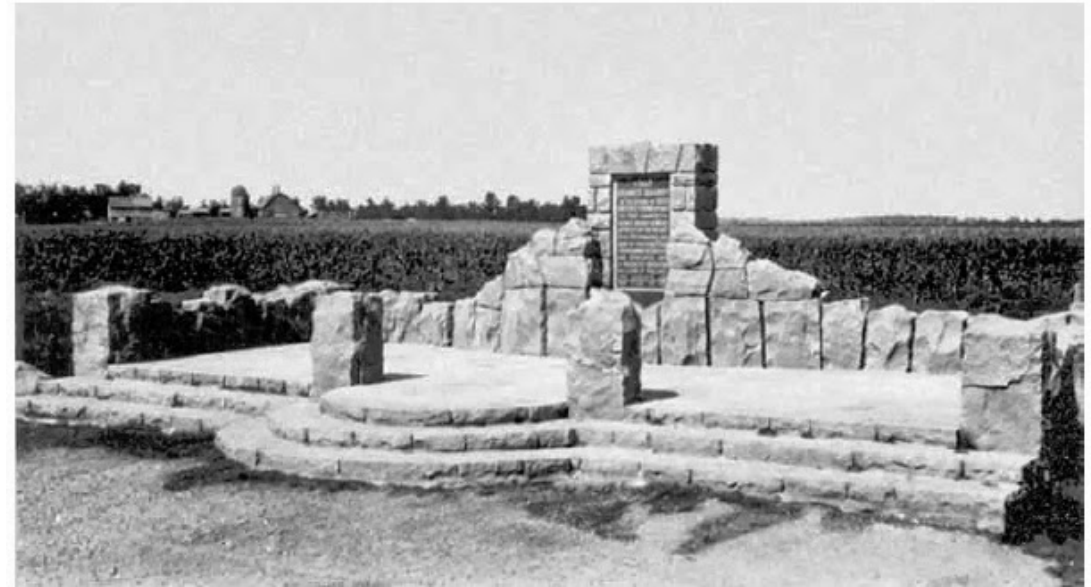


1868 – Breen and Young quarry

Comparison



Comparison

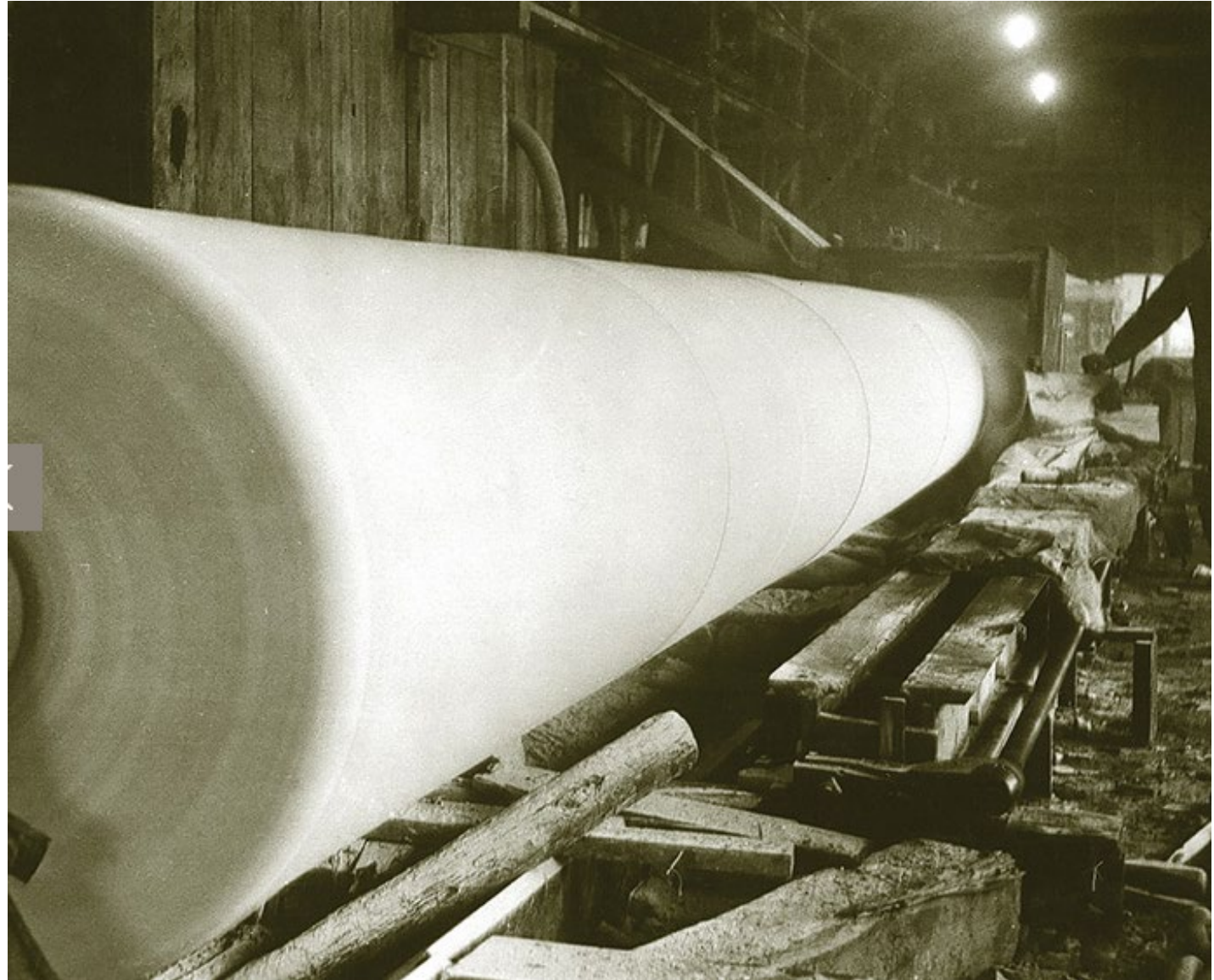


Granite needs cutting, polishing

Tools come to be made, first for granite, then other things.

This is a column produced by then-Rockville Granite for the MN State Capitol.

Firm is now Coldspring.



Thank you, today's Brick by Brick contributors!

Brick by Brick: Building Community Development Through History
Hosted by the Morrison County Historical Society

Brick 3 - April 15, 2021

History Is Infrastructure: The Role of History in Community Development

Moderator: Amy Piekarski, Community Development Administrator, Sourcewell

Presenters:

Morrison County Historical Society

Mary Warner, Executive Director

Ann Marie Johnson, Preservationist

St. Cloud State University

King Banaian, Dean, School of Public Affairs

Camp Ripley Sentinel Landscape

Todd Holman, Coordinator

Minnesota Pollution Control Agency

Melissa Wenzel, Built Environment
Sustainability Administrator

Brick by Brick Contributors

Brick by Brick: Building Community Development Through History
Hosted by the Morrison County Historical Society

City of Little Falls

Greg Zylka, Mayor

Jon Rademacher, City Administrator

Phoebe Ward, Lead for Minnesota Fellow

Community Development Morrison County

Carol Anderson, Executive Director

Taft Law

Mary Ippel, Partner

Morrison County Historical Society

Mary Warner, Executive Director

Ann Marie Johnson, Preservationist

Grace Duxbury, Museum Assistant

Camp Ripley Sentinel Landscape

Todd Holman, Coordinator

Rethos: Places Reimagined

Erin Hanafin Berg, Policy Director

Ethan Boote, Real Estate Manager

MN State Historic Preservation Office

Natascha Wiener, Historical Architect

Spring Hill Capital

Shannon M. Wiger, Principal

Minnesota Pollution Control Agency

Melissa Wenzel, Built Environment Sustainability
Administrator

St. Cloud State University

King Banaian, Dean, School of Public Affairs

Sourcewell

Amy Piekarski, Program Coordinator

Ashley Zidon, Community Development Administrator

Brick by Brick

Building Community Development Through History

Hosted by the Morrison County Historical Society
April 2021

To connect with any of today's panelists,
contact the Morrison County Historical Society at:

staff@morrisoncountyhistory.org
320-632-4007

Thank you for joining us!